



RV-M7

Data Radio Modem

Technical Manual

Version E2

November, 2014



IP65 "Weatherproof" Version



Raveon Technologies Corporation
www.raveon.com

Table of Contents

1.	General Information about the RV-M7	4
1.1	Congratulations!.....	4
1.2	NOTICE.....	4
1.3	Safety / Warning Information.....	4
	Blasting Caps and Blasting Areas.....	4
	Potentially Explosive Atmospheres	5
1.4	Safety Training information:.....	5
	Antenna Installation.....	5
1.5	Certifications	5
1.6	FCC Compliance Information.....	6
2.	Overview.....	7
2.1	Features	7
3.	Specifications	8
3.1	General	8
3.2	Transmitter	8
3.3	Receiver	8
3.4	User Input and Output Signals.....	8
3.5	Model Numbers.....	9
4.	Electrical Inputs and Outputs	10
4.1	LEDs	10
4.2	DC Power	10
4.3	RS-232/EIA232 Serial I/O Connector	11
4.4	-WX Weatherproof Version.....	12
	Power Cord.....	12
4.5	RS-232 serial cable for -WX version	14
4.6	Optional EIA-485/RS-485 Serial I/O	15
	RS-485 Connector Pin Out	15
	Configuring	15
	Bias and Termination Resistors.....	16
4.7	RS422/EIA-422 Serial I/O Connector.....	17
	Configuring for RS-422	17
	Bias and Termination Resistors.....	17
4.8	Low Power Mode (LPM).....	18
5.	User Serial Port Commands.....	18
5.1	Overview.....	18
5.2	Command Mode.....	18
5.3	Setting a Parameter.....	19
5.4	Reading a Parameter	20
5.5	Radio Manager	20
5.6	CONFIG Button.....	21
5.7	Exiting the Command Mode.....	22
5.8	Password Protection.....	22
5.9	Command Mode Commands.....	23
5.10	Other non-AT commands.....	28
5.11	Factory Default Settings.....	29
6.	Using the M7 Modem – Packet Mode	31
6.1	Setup	32
6.2	Programming Channels and Frequencies.....	33
6.3	Data Transmission	33
	Serial Port Baud Rate	33
	Flow Control	34

Packet Size.....	34
Key-On_Data.....	34
Busy-Channel Lock Out.....	34
6.4 Addressing (Packetized Mode only).....	34
Addressing Basics.....	34
Group Numbers	35
Hexadecimal Numbers	35
Setting A System-Wide Address.....	36
Broadcast Transmissions	36
The Address Mask.....	36
Listen Address (Version C21 and higher firmware):	37
Addressing Examples:.....	37
6.5 Error Correction.....	38
6.6 Store-and-Forward Repeating.....	39
Automatic Repeater Configuration	39
Manual Configuration of the Repeat Feature	39
7. Using the M7 Modem – Streaming <i>Mode</i>	43
7.1 Streaming Mode Operation.....	43
7.2 Baud Rate Selection.....	43
7.3 Bit Errors	44
7.4 Carrier Detect.....	44
7.5 Serial Data Flow Control.....	44
7.6 Setting the Over-The-Air Data Rate	45
8. Installation.....	47
9. FCC Licensing Information	47
10. Debug Related Commands	48
11. M7 Diagnostic Provisions	50
11.1 Overview of Diagnostics.....	50
11.2 Reading the Diagnostic Information	50
11.3 Status and Statistics Command	50
11.4 ATST Command	52
11.5 ATST2 Command	52
11.6 ATST3 Command	53
11.7 ATST4 Command	53
12. Tune-up and Alignment.....	53
12.1 Periodic Calibration	53
12.2 Calibration Commands.....	54
12.3 Center Frequency	54
12.4 TX Deviation	55
12.5 TX Modulation Balance	55
12.6 RX Carrier Detect.....	55
13. SkyLine Compatibility	56
13.1 General	56
13.2 Configuring M7 to Communicate with a SkyLine	56
14. Antenna Information.....	56
15. Appendix A. Serial Port Hardware.....	58
15.1 Serial Port Data and Handshaking Signals	58
TxD (INPUT)	58
RxD (OUTPUT).....	58
RTS.....	58
CTS.....	58
CD	59

DTR	59
CD Output Data Framing	59
15.2 Null modem without handshaking.....	60
15.3 Compatibility issues.....	60
15.4 Null modem with full handshaking	61
15.5 Compatibility issues.....	61
16. MIMIC Mode Overview	62
17. Troubleshooting.....	63
Symptom: Unit will not receive.....	63
Symptom: Unit will not transmit	63
Symptom: Receive light blinks, but no data is received	63
Symptom: Long delay before transmitting	64
Symptom: Cannot enter Command Mode.....	64
Symptom: Modem appears dead.....	64
Symptom: Repeater will not repeat.	64
18. Mechanical	65

1. General Information about the RV-M7

1.1 Congratulations!

Congratulations on your purchase of a M7 radio modem – the most advanced radio modem of its kind available today.

Please take a few minutes to read this manual carefully. The information presented here will allow you to derive maximum performance from your radio modem. After reading it, keep the manual handy for quick reference, in case questions arise later on.

1.2 NOTICE

Besides the fuse, there are no user-serviceable points inside this transceiver. All service work must be referred to your Authorized Service Center or Raveon Technologies Service Department.

1.3 Safety / Warning Information

WARNING - DO NOT operate the RV-M7-U radio modem when bystanders are near the antenna.

For the RV-M7-UC, do not operate the radio modem when bystanders are within 2 feet (60cm) of the antenna.

For the RV-M7-VB, do not operate the radio modem when bystanders are within 3 feet (90cm) of the antenna.

The RV-M7 radio should be installed in safe, protected and restricted environment.

While the RV-M7 does have an internal 3A fuse, there is no internal circuit breaker. The radio should be connected with an external circuit breaker.

Blasting Caps and Blasting Areas

To avoid possible interference with blasting operations, turn off this radio or remove the battery pack when you are near electrical blasting caps, in a blasting area, or in areas posted: **“Turn off two-way radio.”** Obey all signs and instructions.

Potentially Explosive Atmospheres

Turn off your radio prior to entering any area with a potentially explosive atmosphere. Do not install this product for use in areas with potentially explosive atmospheres. Do not remove, install, or charge batteries in such areas. Sparks in a potentially explosive atmosphere can cause an explosion or fire resulting in bodily injury or even death.

Note: *The areas with potentially explosive atmospheres referred to above include fueling areas such as below decks on boats, fuel or chemical transfer or storage facilities, areas where the air contains chemicals or particles, such as grain, dust or metal powders, and any other area where you would normally be advised to turn off your vehicle engine. Areas with potentially explosive atmospheres are often but not always posted.*

1.4 Safety Training information:

Antennas used for this transmitter must not exceed an antenna gain of 0 dBd. The radio modem must be used in fixed vehicle-mount configurations or at fixed base-station sites. It is not intended for portable applications.

This radio is restricted to occupational use, work related operations only where the radio operator must have the knowledge to control the exposure conditions of its passengers and bystanders by maintaining the minimum separation distance of following range. Failure to observe these restrictions may result in exceeding the FCC RF exposure limits.

Antenna Installation

For rear deck trunk installation, the antenna must be located at least the following range away from rear seat passengers and bystanders in order to comply with the FCC RF exposure requirements.

For model **RV-M7-UC**:

<p>Radiated frequency and Distance RV-M7-UC (450-480MHz 5 watts) 1.97 Feet (0.6 m) FCC ID: SRS-RV-M7-UC <i>Raveon Technologies Corporation</i></p>
--

For model **RV-M7-VB**

<p>Radiated frequency and Distance RV-M7-VB (150-174MHz 5 watts) 90cm FCC ID: SRS-M7-VB <i>Raveon Technologies Corporation</i></p>
--

For vehicular roof top installation, the antenna must be placed in the center of the roof.

1.5 Certifications

The following certifications are specific to models RV-M7-Vx:

Electromagnetic Compatibility and Radio Spectrum Matters (ERM):

ETSI EN 300 113-2 V1.4.2 (09)

ETSI EN 301 440-2 V1.4.1 (10)

ETSI EN 301 489-1 V1.8.1 (08)

ETSI EN 50 385 (02)

ETSI EN 301 489-3 V1.4.1 (02)

ETSI EN 301 489-5 V1.3.1 (02)

European Automotive EMC Directive:

2004/104/CE

Electrical Safety:

EN 60950-1 :2006/A11 :2009

The following certifications are specific to models RV-M7-VB-x:

Industry Canada: 8386A-RVM7VB

1.6 FCC Compliance Information

This device complies with part 15 of the FCC Rules. Operation is subject to the following two conditions:

(1) This device may not cause harmful interference, and (2) this device must accept any interference received, including interference that may cause undesired operation.

Changes or modifications not expressly approved by the party responsible for compliance could void the user's authority to operate the equipment.

NOTE: The manufacturer is not responsible for any radio or TV interference caused by unauthorized modifications to this equipment. Such modifications could void the user's authority to operate the equipment.

This product also complies with FCC Part 22, 90 and Part 95 Subpart J of the FCC rules and regulations.

The Federal Communications Commission (FCC), with its action in ET Docket 93-62, has adopted a safety standard for human exposure to Radio Frequency (RF) electromagnetic energy emitted by FCC-certified equipment. This product meets the uncontrolled environmental limits as stated in OET-65C (01-01) when operated in accordance with the operation guidelines described in this manual. Proper operation of this radio device according to the instructions in this publication will result in user exposure substantially below the FCC recommended limits.

This equipment generates, uses, and radiates radio frequency energy, and if not installed and used in accordance with the instructions, may cause harmful interference. However, there is no guarantee that interference will not occur. If this equipment does cause interference to radio or television reception, which can be determined by turning the equipment off and on, the user is encouraged to correct the interference by one of the following measures:

- Reorient or relocate the receiving antenna.
- Increase separation between the equipment and receiver.
- Connect the equipment to an outlet on a circuit different from which the receiver is connected.
- Consult the dealer or an experienced radio/TV technician.

2. Overview

The M7 RF data radio is a rugged high-performance, high-speed narrow-band data modem. It contains a receiver, a transmitter, and modem, creating an easy-to-use transparent data radio link. The M7's user interface is asynchronous RS-232 data into and out of the M7 (CMOS level optional). Modem operation is virtually transparent to the user and the configuration of the modem is via the user serial port.



Unlike any other radio modem on the market, the M7 may be operated in either a “*Packetized Mode*” or a “*Streaming Real-Time Mode*”. There are advantages to each approach, and your choice depends upon how your system operates.

For privacy and network versatility, the M7 incorporates a 16 bit identification code. Its protocol also uses a 16bit CRC to guarantee the integrity of the data. Perfect for SCADA and telemetry applications, the M7 can be used for simple point-to-point data communication applications, or for more sophisticated point-to-multipoint, peer-to-peer, or mesh networks.

Although the M7 is the easiest to use modem on the market, its re-programmability makes it extremely versatile. Most parameters within the modem may be re-configured to optimize it for specialized operations, extended range, or higher data throughput.

2.1 Features

- High-speed over the air data rates.
- Built-in radio transceiver with integrated modem
- Easy to use. Plug-in, Turn-on, and GO. Transmit data in = Receive data out.
- Lowest current draw in industry.
- Wide input voltage with high-efficiency switching voltage regulator.
- Integrated Packet data protocol and built-in Streaming Real-Time operation.
- ARQ error correction and retransmission capability. Totally transparent to the application.
- Capable of store-and-forward repeating operation.
- Small sized and very rugged extruded enclosure.
- 16 bit addressing for up to 65,525 different unique device addresses per channel
- Supports group and broadcast transmissions. Network mask allows groups of any size.
- 0.5-5 watts of RF output (user selectable).
- Easily configured using “AT” commands
- Very fast Transmit-to-Receive turnaround time.
- RS-232 serial input and output. Programmable serial baud rates up to 57600.
- Programmable over-the-air data rates for long-range or high-speed
- Automatic key of transmitter on data.
- RF carrier-detect is not required receiving. No squelch setting required.

3. Specifications

3.1 General

All measurements made per TIA-603-B

Frequency:	Model RV-M7-VA (Non-US Frequency; except military).....	136 - 155MHz
	Model RV-M7-VB.....	150 - 174MHz
	Model RV-M7-UA (Non-US Frequency).....	403 - 434MHz
	Model RV-M7-UB (Non-US Frequency).....	419 - 440MHz
	Model RV-M7-UC.....	450 - 480MHz
	Model RV-M7-UD (Non-US Frequency).....	470 - 512MHz
Size.....	4.60" X 2.60" X .956 (11.7cm X 6.6cm X 2.43cm)	
Weight.....	6 ounces (0.17kg)	
DC input voltage.....	10-16V DC	
Internal fuse.....	3A mini blade. Littlefuse part number 0297003 or Raveon part, number 1X726-3	
FCC ID	Model RV-M7-UC-N.....	SRS-RV-M7-UC
	Model RV-M7-VB.....	SRS-M7-VB
	All other models for export or OEM use	

3.2 Transmitter

See Individual product data sheets for RF specifications

3.3 Receiver

See Individual product data sheets for RF specifications

3.4 User Input and Output Signals

Serial port baud rates.....	1200, 2400, 4800, 9600, 19200, 38400, 57600, 115200
Voltage levels.....	RS-232, RS-422, and RS-485 complaint levels
Modem handshake signals.....	RTS, CTS, DTR, DSR, CD
RF I/O.....	50 ohm BNC
Power.....	B+ input and Ground
Power Connector.....	Phoenix 18 36 18 9 (Raveon P/N 1J165-3)

3.5 Model Numbers

The model number of the M7 modem identifies its operating frequency band, RF power level, and bandwidth. The models are:

RV-M7-ab-c-oo where:

a = The band (V=136-174MHz, U=406-512MHz)

b = Sub band (A,B,C,...)

c = Channel Spacing (blank=12.5kHz, W=25kHz)

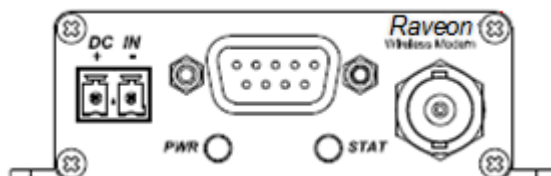
oo = Options (-GX for GPS, -WX for waterproof enclosure)

Other frequency bands, power levels, and channel spacing are available. Contact Raveon for your specific needs.

Sub-Bands

Sub-Band Letter	VHF (RV-M7-V...)	UHF (RV-M7-U...)
A	136-155MHz	403-434MHz
B	150-174MHz	419-440MHz
C		450-480MHz
D		470-512MHz

4. Electrical Inputs and Outputs



The front panel of the M7 modem has these features:

1. RF connector
2. Power LED
3. Status LED (Receive data = green, TX = red)
4. 9-Pin Serial I/O connector
5. DC Power Jack

4.1 LEDs

The status LED indicates the current status of the radio.

Status LED (TX) This LED blinks red when the transmitter keys and is putting out RF power. It blinks green upon the reception of data or RF carrier.

Power LED (PWR) This LED does a short blink, once every two seconds, indicating to the user that the power to the modem is ON and the modem is working. When the modem is in the command mode, this LED will blink on and off, once per second.

4.2 DC Power

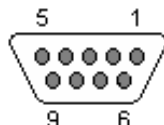
DC power for the modem is connected to the 2-pin DC power input jack labeled **DC IN**. Use the supplied cable to connect the DC power. The **red wire is positive (+)** and the **black wire is negative (-)**. Its connection is optional, as the user may alternately apply power to Pin 9 and ground to pin 5 of the 9-pin I/O connector.

The M7 modem is supplied with a DC power cable, Raveon part number 1C738-1.

Note: The M7 has an internal 3-amp mini-fuse (automotive type) to protect it and its power source against reverse voltage and serious hardware failures. In the event it is blown due to a reverse voltage, it may be replaced by removing the internal circuit board and unplugging the fuse. This must be done by a qualified electronic technician using ESD precautions.

4.3 RS-232/EIA232 Serial I/O Connector

The RS-232 9-pin serial I/O connector is a female 9-pin D-subminiature connector having the following pins configuration. It is pinned out so that it may be plugged directly into a computer or PC's 9-pin COM port.



Front-view of DB-9 connector on modem (female)

Pin	Name	Dir	Function	Level / Specification
1	CD	out	Carrier detect	If enabled, indicates presence of carrier. Logical 0 (+ voltage on RS-232) means carrier is present. If disabled, it is asserted (0) whenever the modem is operational, and not in the configuration mode. It will be a 1 when the modem is in the configuration mode. Configured with the ATR1 setting.
2	RxD	out	Receive data	Data out of the modem.
3	TxD	in	Transmit data	Data into the modem.
4	DTR	in	Data terminal ready	Normally ignored by the M7 modem. May control the power-state of the modem in low-power mode if this feature is enabled.
5	GND		Ground connection	Signal and power ground
6	DSR	out	Data Set Ready	Normally is set to 0 when modem is powered on and running. Modem sets to a 1 when in low-power mode or in command mode.
7	RTS	in	Request to send	Used to stop/start the flow of data coming out of the modem TxD pin. 0 = OK to send, 1 = don't send. Leave disconnected if not used.
8	CTS	out	Clear to send	Used to stop the flow of data going into the RxD pin from the device connected to the M7. 0 = OK to send, 1 = don't send. If the M7 cannot accept more data, it will negate this signal (set to a 1).
9	Power	In/out	DC power (not Ring signal)	User may supply the DC power to the modem on this pin.

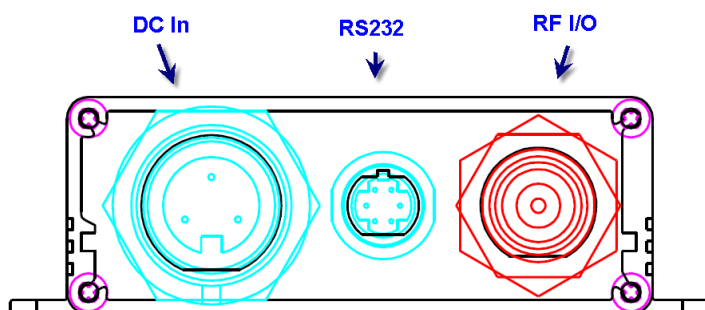
Note: RS-232 signals use positive and negative voltages to represent digital 1s and 0s. A positive voltage is a 0, and a negative voltage is a digital 1.

This pin-out enables the radio to be directly connected to a computer's 9-pin serial port using a conventional 9-pin RS-232 serial cable. To connect it to a modem, or computer peripheral that has a serial port, a "null-modem" cable is required. See Appendix A for more information on wiring a null-modem cable.

To configure the M7 modem for RS-232 operation, use the **ATIO 0** command. RS-232 is the default operation mode for the connector. RS-485 is a factory option. See the next section for details on the RS-485 option.

4.4 -WX IP65-rated ("weatherproof") Version

The -WX version of the product is functionally the same as the standard version, except it is IP65- rated for weather resistance. It has special water-resistant connectors on it, and a sealed enclosure to keep moisture out of the unit.



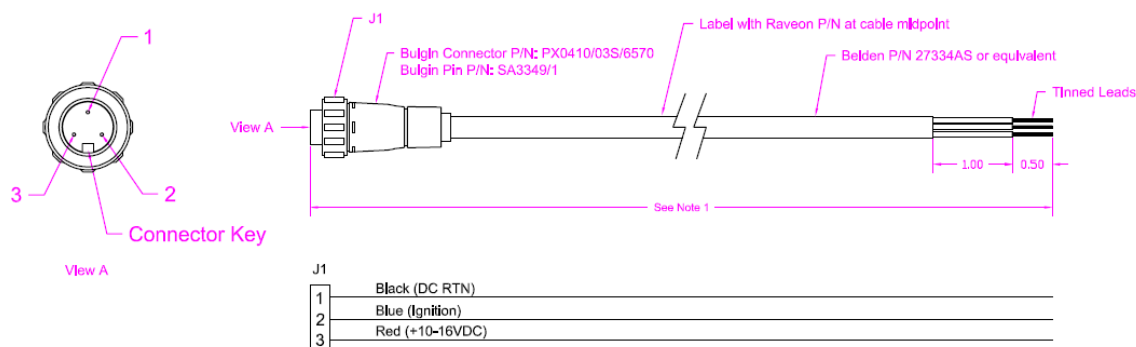
The DC Input connector is a Bulgin PX0412/03P

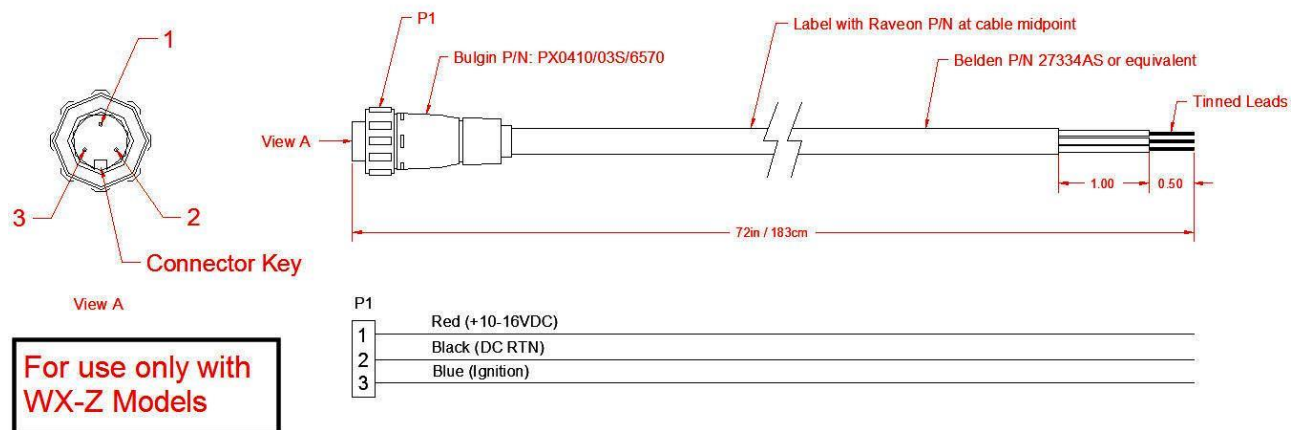
The RS-232 I/O connector is a Hirose HR30-6R-6P(71)

The RF I/O connection is a TNC female.

Power Cord

The DC power cord uses a Bulgin connector, part number SA3349/1. Please note diagram 2 is for use only with WX-Z models.

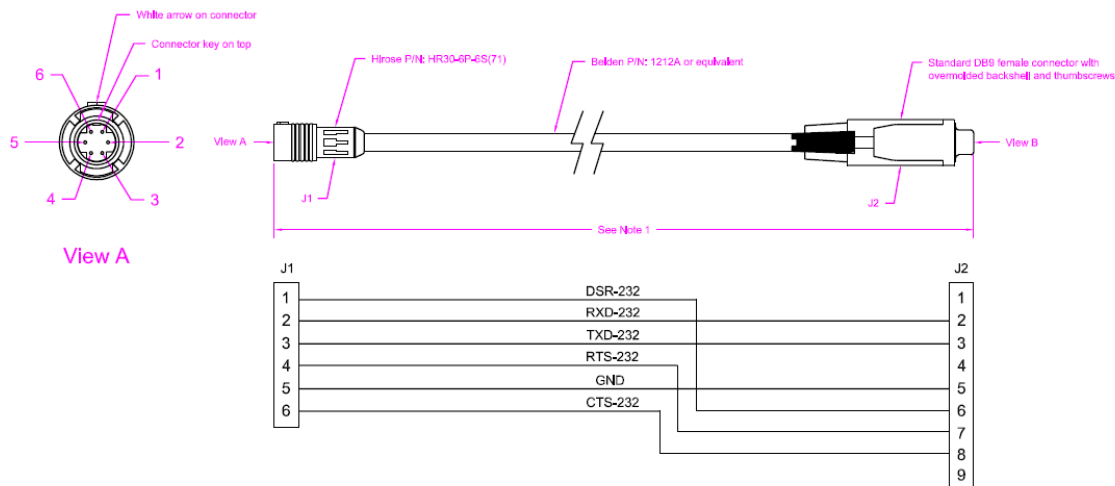




4.5 -WX 5-Pin Circular I/O Connector Pin-Out

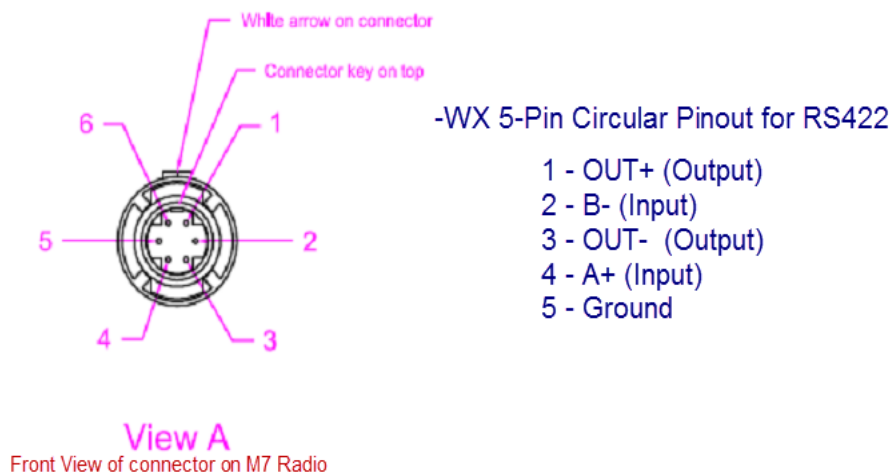
A) RS-232 serial cable for –WX version

The RS-232 serial cable uses at Hirose connector, part number HR30-6P-6S(71).



B) RS-422 Connector Pin-Out on –WX 5-Pin Circular Connector

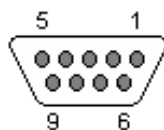
If the RS422 option is installed in the M7 (-WX option), then the RS422 signals are connected to the 5-pin water proof connector as shown below.



4.6 Optional EIA-485/RS-485 Serial I/O

RS-485 Connector Pin Out

RS-485 is a two-wire connection, with the pair of wires transmitting and receiving data. With the RS-485 enabled (**ATIO 2** command), the 9-pin serial I/O connector on the front of the M7 is a female 9-pin D-subminiature connector having the following pins configuration.



Front-view of DB-9 connector on modem (female)

Pin #	Name	Direction	Function	Level / Specification
1		-	Do not connect	Do not connect this pin to anything.
2	B (-)	I/O	B	Inverting RS-485 data in line
3	Out -	out	Z	Connect to pin 2
4	A (+)	I/O	A	Non-inverting RS-485 data out line
5	GND	-	Ground	Connect to earth ground.
6		-	Do not connect	Do not connect this pin to anything.
7	Out +	out	Y	Connect to pin 4
8				
9	Vin	In/Out	DC Power	DC Power in or out if unit is powered using DC in jack.

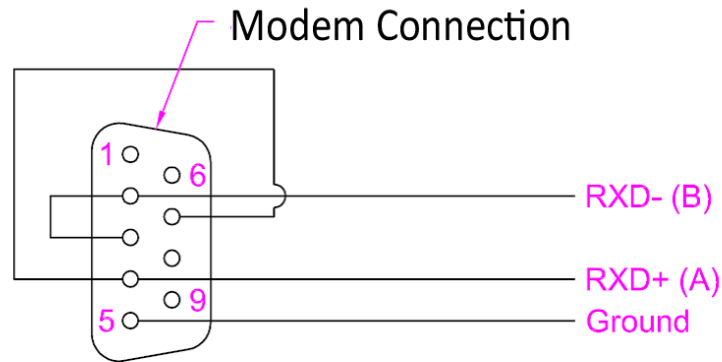
The RS-485 differential line consists of two pins, A and B.

A TxD+/RxD+ non-inverting pin which is positive (compared to B) when the line is idle.

B TxD-/RxD- aka inverting pin which is negative (compared to A) when the line is idle.

Configuring

To configure the M7 modem for RS-485 operation, use the **ATIO x** command. **ATIO 2** sets the serial port for standard RS-485, full duplex. **ATIO 3** sets the serial port for RS-485 simplex mode. In most cases, RS-485 simplex is preferred (**ATIO 3**). In simplex RS-485 mode, the M7's serial data receiver is internally disabled whenever it sends a character out the serial port, so that it will not receive its own data. For most application use the RS-485 simplex mode, **ATIO 3**. If you are using two M7 modems with RS-485 on both units, you must use the simplex RS-485 mode instead of the duplex RS-485 mode, or the modems will enter an infinite loop-back condition.



RS-485 Connection to modem

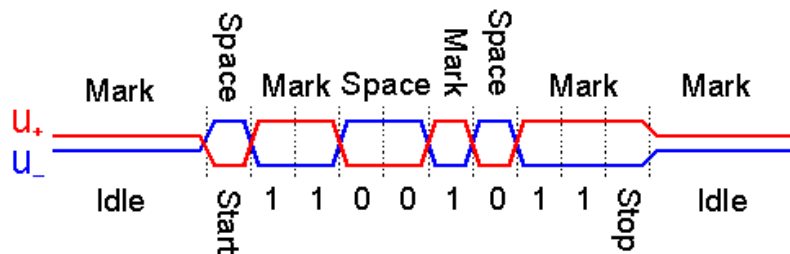
If you wish to run the RS-485 in full-duplex mode using two M7s, the interface must be wired with two separate pairs of wires; A&B on one pair, and Out+ & Out- on the other pair.

The M7's RS-485 I/O circuit uses 3.3V logic to drive the lines, and the RS-485 pins are ESD protected to $\pm 15\text{kV}$ and 7kV human body model. Input current is less than 150uA. Output current when not driving the line is less than 50uA.

Bias and Termination Resistors

RS-485 installations typically have a termination resistor across the A and B lines. For low-speed operation (<57600 baud), this resistor is probably not necessary. If you wish to use a terminating resistor, a value of 150 ohms should work in most applications.

These A/B pin names are all in use on various types of equipment. The RS-485 signaling specification states that signal A is the inverting or '-' pin and signal B is the non-inverting or '+' pin. The same naming is specified in the NMEA standards.



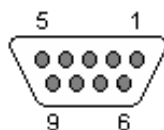
When an RS-485 network is in an idle state, all nodes are in listen (receive) mode. Under this condition there are no active drivers on the network. All drivers are tri-stated. Without anything driving the network, the state of the A and B line is unknown. If the voltage level at the receiver's A and B inputs is less than $\pm 200\text{mV}$ the logic level at the output of the receivers will be the value of the last bit received. In order to maintain the proper idle voltage state, bias resistors must be applied to force the data lines to the idle condition.

M7 RS-485 receivers have built-in bias resistors, offering the network a true "1/8 unit load". In most allocations, these internal bias resistors are sufficient, and an external bias resistor is not required.

Phoenix Contact/Tyco makes a convenient DB-9 to terminal-block connector, part number 2761839.

4.7 RS422/EIA-422 Serial I/O Connector

RS-422 communications uses 4-wire differential signals. The RS422 9-pin serial I/O connector is a female 9-p D-subminiature connector having the following pins configuration.



Front-view of DB-9 connector on modem (female)

Pin #	Name	Dir	Function	Level / Specification
1		-	Do not connect	Do not connect this pin to anything.
2	B (-)	In	B	Inverting RS-422 data in line
3	Out -	out	Z	Inverting data out pin
4	A (+)	in	A	Non-inverting RS-422 data in line
5	GND		Ground	Connect to earth ground.
6		-	Do not connect	Do not connect this pin to anything.
7	Out +	out	Y	No-inverting data out
8				
9	Vin	In/Out	DC Power	DC Power in or out if unit is powered using DC in jack.

Configuring for RS-422

To configure the M7 modem for RS-422 operation, use the **ATIO 4** command. You must order the RS-422 option for this to work. The M7's hardware is identical to the RS-485 version, with the exception of two internal loop-back resistors.

Raveon's RS-422 I/O circuit uses 3.3V logic to drive the lines, and the RS422 pins are ESD protected to $\pm 15\text{kV}$ and 7kV human body model.

RS-422 installations typically have a termination resistor across the In and the Out lines. A value of 150 ohms should work in most applications.

Bias and Termination Resistors

M7 transceivers with the RS-422 option have receivers with built-in bias resistors, offering the network a true "1/8 unit load". In most allocations, these internal bias resistors are sufficient, and an external bias resistor is not required.

Serial out data comes out pins 3 and 7. Serial input data comes in via pins 4 and 8. Connect pin 5 to earth ground.

4.8 Low Power Mode (LPM)

The *M7* modem, has the ability to be put into a low power sleep mode (SM). In SM the modem draws much less current from the DC input. In SM, the internal radio circuits in the *M7* are disabled, as well as certain current-consuming hardware circuits. The ability of the *M7* to go into LPM is set with a configuration bit, using the **ATSM** command.

ATSM 1 configures the *M7* to monitor the DTR input line, and enter the LPM mode whenever DTR is negated. If the DTR signal is asserted, the *M7* modem will operate normally.

The **ATSM 2** command forces the *M7* modem into the low-power mode. In the Low Power mode, the *M7*'s radio circuits are off, but it will still respond to serial commands.

The **ATSM 4** command forces the *M7* modem into the low-power mode, but keeps the ability to transmit data. In the Sleep Mode 4, the *M7*'s radio circuits are off, but it will still respond to serial commands. It will turn its transmitter circuits on when there is data to send, send the data, and then power the transmitter and receiver off.

The **ATSM 0** command returns the *M7* modem into the normal-operating mode with the receiver and transmitter operational.

DTR negated means it is a negative voltage. A voltage less than zero volts applied to DTR will turn the *M7* off by putting it into LPM. To assert the DTR signal (turn the modem on), the DTR line must be high (> 3V). DTR is an input to an RS-232 transceiver IC. It is ESD protected, and is safe for voltages from – 20V to +20V input.

The factory default value for the **ATSM** setting is **0**. When **ATSM** is a zero, the *M7* will not ever enter the LPM mode, and the DTR input signal is ignored.

5. User Serial Port Commands

5.1 Overview

The serial portion the RF modem is used to send and receive data over the air, as well as to configure the RF modem. In normal operation, the user sends data into the TxD pin of the user port, and this data is transmitted over the air. Received data from another RF modem is output to the user via the RxD pin of the user port. This is the default operating condition of the RF modem. No special characters, hardware control lines, or timing is required to operate the *M7* modem.

There is also a “Command Mode” used to program and configure the *M7*. In the Command Mode, the *M7* modem accepts commands via the serial port TxD pin. The commands can be used to change certain internal parameters of the *M7* modem as well as to read-out the current configuration and diagnostic statistics.

5.2 Command Mode

The *M7* modem may be put into a “Command Mode”, by entering a sequence of three plus characters (+++). To keep the *M7* modem from unintentionally entering the Command Mode because of the +++

pattern occurring in a stream of data entering the modem, there must be a pause in the data stream before the +++ as well as a pause after the +++ is sent. If either pause is missing, the modem will not enter the command mode.

Using serial communications software such as *HyperTerminal*, send the 3-character command sequence “+++” while observing times of silence before [BT (Silence Before Sequence) Command] and after [AT (Silence After Sequence) Command] the command characters. The default BT and AT times are 500mS.

The default sequence for entering into AT Command Mode:

1. *No characters sent for ½ a second.*
2. *Input three (3) plus characters (“+++”) within ½ of a second.*
3. *No characters sent for ½ a second.*

When the M7 modem first enters the Command Mode, it sends the phrase “M7” out it serial port, and then an “OK” sequence. The “OK” sequence is a sequence of 4 characters:

An “O”, “K”, <CR>, and <LF> characters (<CR> = ASCII 0D, <LF> = ASCII 0A)

5.3 Setting a Parameter

To set a parameter in the M7 modem, enter the Command Mode as described above. Then enter the proper AT command, a space, the parameter, and then a carriage return. For Example, to set the address of the M7 modem to 1234, enter the following command:

ATDT 1234 <CR>.

Once a Parameter is changed, the modem will begin using the new parameter and the new parameter is saved to non-volatile.

5.4 Reading a Parameter

To read the value of a particular setting, issue the command, with no parameter. The modem will return the value followed by an "OK". The modem's OK response is:

The value in ASCII decimal format.

A <CR> <LF> (<CD> = ASCII 0D, <LF> = ASCII 0A).

An "O", "K", <CR>, and <LF> sequence.

For example, if the user enters the command to read the M7's modem address and its address was 1234, the user would issue the following command:

ATDT<cr>

and the modem will respond with:

1234 <CR> <LF> **OK** <CR> <LF>

To get on-line help with a command, enter the command and put a question mark in for the parameter. For example, to see what the ATDT command is for, type **ATDT ?**. The modem will respond by listing a brief description of the command. To see a list of all commands, type **HELP**.

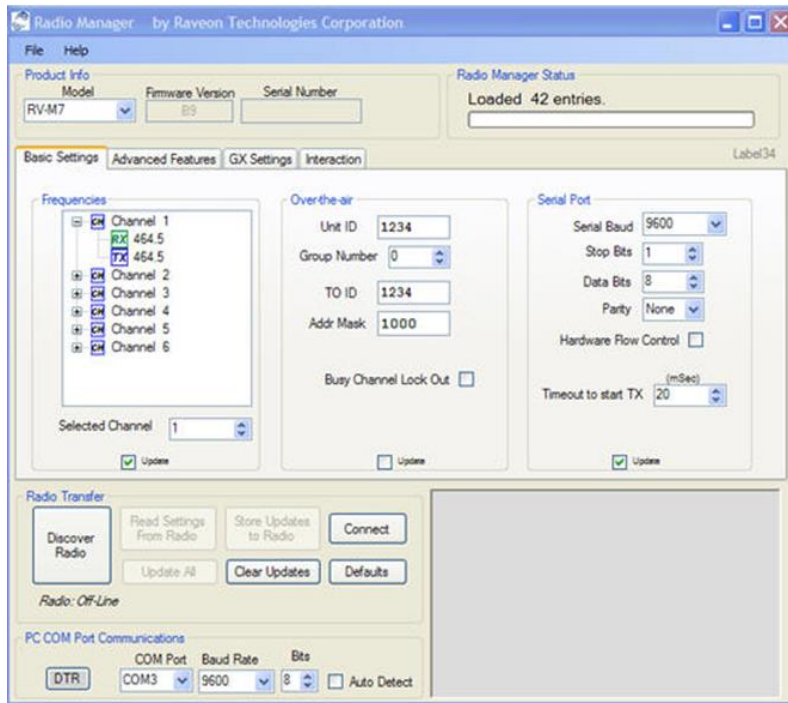
5.5 Radio Manager

Radio Manager is a Windows XP/Vista software application that is used to configure Raveon's data radio products. It is compatible with all Raveon radio models, and provides configuration management, as well as programming assistance, diagnostic information, and a helpful "band scope" feature.

Radio Manager features:

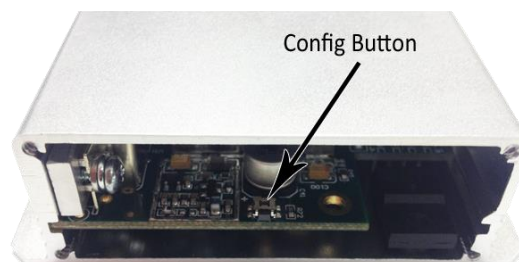
- Supports all Raveon Radios (M3, M5, M7 and M7 GX series)
- An easy to use graphical interface
- Simplified editing of a radio's configuration
- Configurations may be stored to a file or retrieved from a file
- Intelligent parameter verification to help configure technical parameters
- On-line help
- Built-in terminal mode
- "Auto-Detect Radio" feature searches through possible serial port settings
- Band Scope feature graphically displays on and off channel signal levels

You can use Radio Manager in lieu of learning all of the M7's commands and programming protocol. In most situations, it is very useful for configuring the M7. There are certain very advanced configurations that will require manual programming, but in most cases Radio Manager will be the easiest way to setup your radio.



5.6 CONFIG Button

If certain parameters within the modem are modified in a manner that causes the modem to cease functioning or if the user cannot enter the command mode via the “+++” method described above, there is a small push button internal to the M7 modem to assist in this case. This CONFIG button may be pressed at any time, and forces the modem into a known operational state. The CONFIG button is located inside the modem. Remove the rear cover, exposing the two circuit boards. The button is in the center of the lower circuit board as shown below.



The default settings that the modem will revert to when the CONFIG button is pressed are:

1. Serial port 9600 baud, 8 data bits 1 stop, no parity
2. ATCT setting set to 60000 (60 second time-out)
3. Serial port on the front of the unit in RS-232 mode, 9600bps, N/8/1.

If the unit was configured for RS-485, RS-422, or Ethernet, you must disconnect other devices and use an RS-232 device to configure the M7.

Even though the serial baud rate reverts to 9600 baud when the CONFIG button is pressed and the IO port is RS-232, it will revert back to the settings programmed into the M7 modem once the Command Mode is exited.

Note: If the user-interface is password protected, and the Config button on the M7 is pressed, for security reasons, the encryption phrase is automatically erased.

5.7 Exiting the Command Mode

There are three ways to exit the command mode. They are:

1. **ATCN** Issuing the **ATCN**. The M7 radio will exit the command mode, and begin normal operation.
2. **EXIT** Issuing the **EXIT**. The M7 radio will exit the command mode, and begin normal operation.
3. **Time Out**. After a pre-set amount of time (60 seconds is the factory default time), the modem will automatically exit the Command Mode, and continue normal operation. Changes will not automatically be saved. This time-out duration may be set with the **ATCT** command.

5.8 Password Protection

On M7 series products with firmware version C0 or higher, the user interface may be password protected. If it is password protected, the radio will output a "password:" prompt when entering the command mode.

When in the command mode, to enable the use of a password enter:

Password xxxx <CR>

Where xxxx is the 2-7 digit password you would like to protect the user interface with.

To disable password protection, enter:

Password 0 <CR>

Note: If the user-interface is password protected, and the Config button on the M7 is pressed, for security reasons, the encryption phrase is automatically erased.

5.9 Command Mode Commands

AT Command	Command Description	Parameters	Factory Default
ATAK	Enable/Disable ARQ – When ARQ is enabled, this modem will automatically send an ACK packet back to a modem that sends it data. 0=off, 1=on.	Range: 0 – 1	0 (no ACKs sent)
ATAT	Silence AFTER Sequence - Sets period of silence after the command sequence characters in mS.	Range: 0 – 1000 (mS)	500
ATBD	Baud Rate – Sets serial com port baud rate (bps). Over-the-air (throughput) baud rate is set with ATR2 command. If a PC's serial baud rate is set higher than the fixed over-the-air baud rate of the module, hardware handshaking may be required. With firmware C22 and higher, you may enter the actual baud rate instead of the index number.	Range: 0 – 7 0 = 1200 5 = 38400 1 = 2400 6 = 57600 2 = 4800 7 = 115200 3 = 9600 4 = 19200	3
ATBC	Busy Channel Lock Out – Enable/disable the BCL. If enabled, the modem will not transmit on a radio channel that is busy (has RF on if). 0-OFF, 1=ON.	Range: 0-1	0
ATBT	Silence BEFORE Sequence – Sets period of silence before the command sequence character in mS.	Range: 0-1000 mS	500
ATBW	Set/Read IF Bandwidth - Sets the IF bandwidth to narrow (N) or wide (W). Narrow is for 12.5kHz channels, and wide is for 25 or 30kHz spaced channels. This command is only used on the VHF version of the product. The UHF does not support w	N	N or W
ATCD	Carrier Detect Threshold – Read/set the carrier detect threshold, in dBm. -113 means -113dBm. Version firmware and higher.	-113	-120 to -60
ATCH	Configure Hardware Flow Control – Enable (1) or disable (0) flow control. When enabled, the modem will monitor the RTS line, and if it is negated, stop sending data out the serial port. If disabled, the modem will ignore the state of RTS, and always send out characters.	1 = Enable 0 = Disable	0
ATCI	Configure Hardware Flow Control Invert – When enabled, the RTS line will operate on an inverted input (e.g., send data	1 = Enable	0

	when the line is negated).	0 = Disable	
ATCS	Set automatic on-line after ATDT command – 0: stay in command mode after exiting ATDTxxxx command. This is the default configuration. 1: Exit command mode after receiving an ATDTxxxx command. See technical bulletin AN163 for more information about this command.	1 = Enable 0 = Disable	0
ATCH	Configure Hardware Flow Control – Enable (1) or disable (0) flow control. When enabled, the modem will monitor the RTS line, and if it is negated, stop sending data out the serial port. If disabled, the modem will ignore the state of RTS, and always send out characters.	1 = Enable 0 = Disable	0
ATCT	Command Time Out – If no valid commands have been received via the serial port within this time period (in milliseconds), modem returns to normal operation mode from Command mode. If the CONFIG button inside the M7 is pressed, this parameter will be automatically set to 60000.	Range: 100-60000mS	60000
ATDR	Set Destination Address and exit command mode – Sets address of the modem to send data to. Note, this parameter is entered in HEX format. Each digit may be a 0,1,2,3,4,5,6,7,8,9,A,B,C,D,E,or an F. After setting the destination address, the unit exits the command mode, and goes on-line. See technical bulletin AN163 for more information about this command.	Range: 0-FFFF	-
ATDT	Destination Address to call – Sets address of the modem to send data to. Note, this parameter is entered in HEX format. Each digit may be a 0,1,2,3,4,5,6,7,8,9,A,B,C,D,E,or an F.	Range: 0-FFFF	1234
ATE	Echo – Character echo set on (E1) or off (E0). This applies to the Command Mode only.	Range: 0 , 1	1 (echo)
ATF	Display frequencies – Display all of the frequencies programmed into all of the channel memories.		N/A
ATFT	Transmit Frequency – Program the transmit frequency for this channel. Enter in Hz or in MHz. The frequency will automatically be saved in non-volatile memory (flash) for this current channel number.	Range: See product data sheet. For MURS products, frequency cannot be changed.	See product data sheet.
ATFR	Receive Frequency – Program the receive frequency for this channel. Enter in Hz or MHz. The frequency will automatically be saved in non-volatile memory (flash) for this current channel number.	Range: See product data sheet. For MURS products, frequency cannot be changed.	See product data sheet.
ATFX	TX and RX Frequency – Program the receive and transmit frequency for this channel. Enter in Hz or MHz. Same as issuing an ATFR and an ATFT command. The frequency will automatically be saved in non-volatile memory (flash) for this	Range: See product data sheet.	N/A

	current channel number.		
ATGP	Group Number – Set/read the group number for this unit. 0 means ignore the group number. 1-255 is a group identifier. Only M7s with the same Group Number will communicate together.	0-255	0 (ignore group numbers)
ATH0	Hang-Up – Tells the M7 to stay off-line. Effectively does nothing.	0	N/A
ATH1	Hang-Up – Tells the M7 to exit the command mode and go on-line. C22 or higher firmware. See technical bulletin AN163 for more information about this command.	0	N/A
AT\$H	On-line timer – If set to 0 (the factory default setting), the M7 will always revert to the operation-mode(on-line). This is the factory default operation, and is the way the M7 has operated since its inception. Set to 10 or more to configure M7 to revert off-line (command mode) if more than xxx seconds pass with no TX or RX data. C22 or higher firmware required. See technical bulletin AN163 for more information about this command.	0	10-999
ATHP	Channel Number – Select separate channels to minimize interference between multiple sets of modules operating in the same vicinity. The channel number is stored in EEPROM memory.	Range: 1 - 6	1
ATHS	Show History – Show a table of listing the most recent receptions, and the IDs that the data was sent from	No parameter	
ATHX	Enable/Disable single-hop repeating – 0=any number of repeats, 1 – unit will not repeat a packet that was already repeated.	0 or 1	0 (multi-hop OK)
ATIO	Configure the I/O The proper hardware option must be installed in the modem. All M7 modems support RS-232 mode. See technical bulletin AN161 for information about MIMIC IO mode.	Range: 0 - 5 0=RS-232 1=MIMIC 2=RS-485 dup 3=RS-485 simplex 4=RS422 5=GPS	0
ATIC	Read Current Draw Read the current draw in mA. Accuracy is within 20% of actual current draw.	Range: 0-9999	N/A
ATJF	Read/set the CTS threshold – Set the serial buffer threshold where the CTS line is negated. By default the ATJF level is at 80% of the internal buffer size.	1 - 3200	3200
ATL	Enable/Disable the LEDs – 1 = LEDs always off. This reduces some power consumption. 0 = LED operate normally.	0 or 1	0
ATLA	Set/Read the Listed address (Version C22 or higher firmware). The Listen Address is a second address that the unit will be able to receive. Set to FFFF to disable this feature.	Range: 0001 - FFFF	FFFF
ATMK	Address Mask – Configures local and global address space. Each digit may be a 0,1,2,3,4,5,6,7,8,9,A,B,C,D,E,or F. In most applications, this is kept at FFFF.	Range: 0000 - FFFF	FFFF

ATMT	Protocol Select – The over-the-air communication protocol. 0=Packetized mode, 2=Streaming data.	Range: 0-2	0
ATMY	Unit Address – Configures the individual; address for this unit. Each digit may be a 0,1,2,3,4,5,6,7,8,9,A,B,C,D,E,or F. Note: FF is interpreted as a group. See addressing section.	Range: 0000 - FFFF	1234
ATNB	Parity – Selects parity format. Settings 0-4 transfer 8-bits over antenna port and generate the parity bit on the RF receiving side.	Range: 0 – 5 0 = none 1 = Odd 2 = Even 3 = Mark (1) 4 = Space (0)	0
ATND	Number of Data Bits – Set/read the number of data bits.	Range: 5 - 8	8
ATNS	Stop Bits – Selects the number of stop bits.	Range: 1-2	1
ATPE	Packet Error Display – Shows statistics to compute packet-error rate. Displays Packets Per Minute (PPM) and a running total.	None (display PER) 1 = reset counters 2 = Stop PER display	None
ATPO	RF Power Output . Set or show the RF power output setting. Value is in percent, from 0% to 100%. Use and RF wattmeter to confirm the power setting, and adjust the % accordingly to obtain the desired RF power level.	0-100	100
ATRO	Symbol Peak Deviation – Set the peak FM deviation of the transmit symbols. Note: This can be a negative number to invert the modulation.	Range: -1000 – 1000	120**
ATR1	Select CD pin output signal – CD may be RF carrier detect, or modem data detect. If set to 2, CD will be asserted when on-line, and negated in the command mode.	Range : 0 - 2 2 = Assert CD online 1 = Data CD 0 = RF CD	0
ATR2	Over-The-Air bit rate - This is the data rate the radio uses to send data over the air. All RF modems in the network must use the same over-the-air baud rate. Refer to section 7.6 for information on how to set the OTA baud rate. With firmware C22 and higher, you may enter the actual baud rate instead of the index number.	Range: 0 = 800 5 = 9600 2L 1 = 1200 6 = 19200 4L 2 = 2400 7 = 5142 2L 3 = 4800 8 = 9600 4L 4 = 8000 4L 9 = 2000 2L	3 (narrow)
ATR3	Serial Port Time Out – The time in milliseconds for the serial port to time out. When data is entering the serial port, and this amount of time passes with no more data, the M7 will begin to transmit the data over the air.	Range: 1 - 999	20 20mS is the default.
ATR5	Preamble length – The number of bytes to send over-the-air in the pre-amble.	Range: 3 - 255	5** (Varies based on data rate and radio type. 7 typical)

ATR8	Frequency Offset. Used to set the radio on the center of the radio channel.	Range: -500 to +500	0**
ATRB	Number of retries. If this modem does not get an ACK back when it sends data, this is the number of times it will re-transmit the packet and wait for an ACK. 0=disabled feature.	Range: 0-99	0 (ACKs are not used)
ATRF	RF Carrier Required – When enabled, there must be RF energy on the channel for the modem to output data. Streaming data mode only. 1-RF required. 0=ignore RF energy when receiving.	Range: 0, 1	0 (no RF required)
ATRQ	Receiver Signal Level – Reads the Receiver Signal strength this instant, and returns the level in dBm.	Range: -40 to -130 (dBm)	-
ATRS	RSSI (Receive Signal Strength Indicator) – Returns the signal level of last received packet. The reading is in dBm. Usable for relative comparison of signals, but absolute value is within 10dB at -90dBm.	No parameters. Returns a number : -50 to -140 (dBm) varies by model.	none
ATRV	Disable Remote Access – When enabled (set to a 0), the modem will respond to over-the-air RPR requests, Pings, and over-the-air commands. Default is OFF (1).	0 = Remote Access on 1 = Remote Access off	1
ATS120	Set Data Framing Pre-Data Time – When enabled (set to anything but 255), sets the pre-data time for CD Data Framing (See 15.1 for more information)	0-254 = Enabled 255 = Disabled	255
ATS121	Set Data Framing Post-Data Time – Enabled by ATS120. Sets the post-data time for CD Data Framing (See 15.1 for more information)	0 = Remote Access on 1 = Remote Access off	255
ATSL	Serial Number – Reads and returns a unique serial number for this unit.	Read Only 1 - 999999999	unique
ATSH	Show – Display the configuration of the modem. This will return a page of ASCII characters, showing the main configuration parameters.	none	None
ATSM	LPM Operation Enable – When set to 1, the DTR input line controls the M7's low-power operation. When set to 0, the M7 will not go into LPM, regardless of the state of the DTR pin. When set to 2, the modem is forced into a low-power mode, disabling the receiver. The unit will still transmit data in sleep mode 2. Mode 4 keeps RX off but will transmit data.	Range: 0, 1, 2, 3, 4	0
ATST	Statistics – Show the unit's operational statistics. See Statistics section of user manual.	0, 1, 2, 3, 4, or 5	None
ATTD	Transmit Test Data – When issued, the modem will begin transmitting data. The type of data sent is set in the parameter. Entering a <CR> will terminate the transmission.	0 = Go back to normal 1 = Random 3 = 1010... at ¼ baud rate 4 = TX all 0s	

		5 = TX all 1s 6 = Test Points ON 7 = Transmit CW 8 = Transmit 1010101...	
ATTE	Read product temperature – Read the internal temperature of the unit's circuit board in degrees Celsius.	-40 to +99	-
ATTT	Max Packet Size – Set the maximum number of bytes in an over-the-air packet.	1 - 512	80
ATV0	Numeric Response code – Configure the unit to send 0, 1 and 2, response codes.	-	-
ATV1	Verbose Response code – Configure the unit to send OK, ERROR, and CONNECT response codes. This is the default value.	1 (Verbose messages)	V1
ATVB	Read DC input Voltage – Returns the DC input voltage reading, in mV (12500 = 12.5VDC input).	None	none
ATVR	Firmware Version – Returns firmware version currently loaded on the module.	Read Only, 3 characters	none
ATXn	Show or Configure the Repeat Table – Set the addresses that this unit will store-and-forward data to/from. n = 1, 2, 3, or 4 designating the entry in the table to show or edit..	<i>Four parameters</i> aaaa bbbb cccc dddd where aaaa=Source Address bbbb = S.A. Mask cccc = Destination Address dddd = D.A. Mask	
ATXR	Enable/Disable Store and Forward Repeating – 0=disabled, 1 – enabled.	0 or 1	0 (Off)
ATXT	Read/set repeater delay – Read or set the repeater delay. This is the time between receiving a data packet, and the time the repeater will re-send it.		
AT&F	Restore Factory – Restore the factory default values. This command will not erase the calibration values. After this command executes, the modem will still be in the CONFIG mode.		none
AT&F%RN	Go off-line and enter command mode – If the string AT&F%RN is sent to the modem when it is on-line and the BT and AT timing is meet, the modem will go off-line and go into the command mode. C22 or higher firmware. See technical bulletin AN163 for more information about this command.	AT&F%RN	none

** indicates values that are calibrated in the factory and are unit-specific. If the "Radio Type" is changed, these will need to be re-calibrated.

5.10 Other non-AT commands

BAND	Read the Band – Reads the frequency band of the radio. First parameter is the text version (UA, UC, VB, ...), second parameter is the lower limit, and the third parameter is the upper limit in MHz. Use to read the band	None	-
-------------	---	------	---

	that the radio is tuned to cover.		
CONFIG	Display the M7's configuration.	0, 1, or 2	-
MODEL	Read Model number. Read the model number.	None	-
PING	Ping another modem. Format is PING xxxx, where xxxx is the ID of the modem to ping. If remote access is enabled on xxxx, it will respond.	XXXX	-
REPEAT	Turn Repeater feature on/off. If 1, a quick way to enable repeating all packets. If 0, disables the repeat feature.	0 (off) or 1 (on)	0
RPR	Remote Procedure Request. Used to request execution of a command on a remote mode (over the air). See <i>M7 System Protocol</i> manual for information on using this feature.		
SHOW	Show/display an overview of the radio's configuration.	None	-

5.11 Factory Default Settings

For the UHF M7, model RV-M7-Ux, the main factory defaults are:

Channel 1 (-UC model) 464.500 MHz
 Channel 1 (-UA model) 413.100 MHz
 Over-the-air baud rate: 4800 baud, 2-level
 Serial port RS-232, 9600baud, N/8/1
 Hardware flow control Off
 RF Power Output 100%
 Channel number selected 1
 ID (ATMY) 1234
 Net Mask (ATMK) FFFF

For the VHF M7, model RV-M7-VB, the main factory defaults are:

Channel 1 151.625 MHz
 Over-the-air baud rate: 4800 baud, 2-level
 Serial port RS-232, 9600baud, N/8/1
 Hardware flow control Off
 RF Power Output 100%
 Channel number selected 1
 ID (ATMY) 1234
 Net Mask (ATMK) FFFF

6. Using the M7 Modem – Packet Mode

This section describes the operation of the when it is in the *Packet Mode* of operation. Packet Mode is the factory-default operating mode. It is the easiest and most reliable mode of operation for a modem. Note: The configuration of the M7 is done when the M7 is in the “Command Mode”. Refer to Section 5. on page 18 for details on all of the available commands and programmable features.

In Packet Mode, all transmissions are sent in bursts or packets, and contain address, error detection, and error correction information. Data enters the M7 modem’s serial I/O port, and is stored in a buffer within the modem until it is ready to be transmitted. Packetized operation has these advantages over non-packet modems:

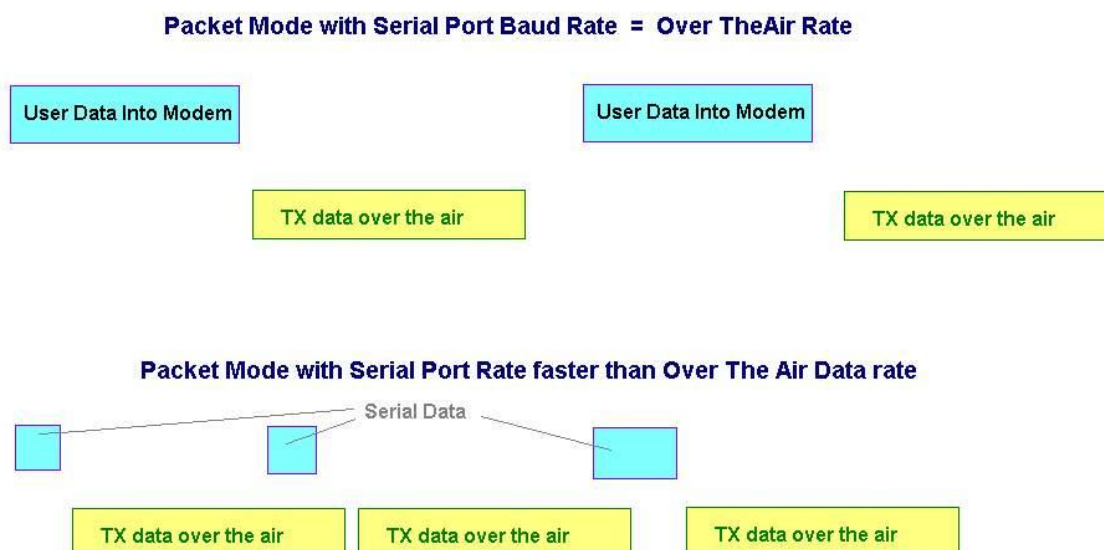
Packet Mode Advantages

1. **Error Detection** The modem uses a 16-bit CRC at the end of every packet of data. The CRC is used to check the data for errors, and if there are any errors, the data will not be passed onto the user.
2. **Error Correction** Automatic error correction may be used. M7 modems incorporate an optional ARQ method to re-transmit packets with error, to ensure the user’s data is delivered error-free.
3. **Addressing** Packetized operation allows for a more versatile network architecture, with source, destination, and network addresses. M7 uses a 16-bit address to identify data packets.
4. **No Dribble Data** Even in the presence of noise, the M7 modem will not output extra data or have random bit errors. Modems without packet operation generally do not work well with weak noisy signals.
5. **Transparent Operation** Because of the high-reliability and error-free operation the Packet Mode offers the user, most user applications will seamlessly work using the M7 in its Packet Mode.
6. **Repeatable and Routable.** M7 packets are structured so that they may be repeated using a store-and-forward repeater, and/or routed using specialized hardware.

Streaming Mode Advantages

1. **Low Latency** The transmitter will key-up immediately upon the user’s first byte of data entering the modem. Packetized operation waits until a packet has been loaded before keying. (Although high serial-port data rates can minimize this packet latency to a negligible level).
2. **Data with Errors** The M7 will continue to receive data, down into the noise-floor of the radio. If the channel is noisy or the signal is weak, there may be bit-errors in the data, or the M7 may output additional noise data. User applications must (and often do), take this into account, and thus can operate with weaker signals and have longer communication range.

Figure 1 (Packet Mode of Operation)



For operation of the modem in the streaming data, non-packetized mode, see the section **Streaming Mode** on page 41. The Packet or Streaming operation is configured using the **ATMT** command, with Packet Mode being the factory default.

6.1 Setup

1. Connect a DC power source to the DC IN connection on the front of the modem.
2. Connect a good quality antenna, cut to the operating frequency, to the BNC connector on the front of the modem. Use a good antenna, and place is at high-above obstructions as possible.
3. Connect a computer terminal, or PC computer running HyperTerminal, to the 9-pin I/O connector. The factory default serial ports settings are 9600 bps, 8 data bits, 1 stop, no parity.
4. Program the modem's operating frequency to your desired operating frequency. This is done with the **ATFX xxx.xxxxx** command. See the section "**Serial Port Commands**" for information describing the various parameters that may be modified in the modem. In most applications, the default settings from the factory will work fine.
5. Using the AT commands, change any of the default operating parameters that must be modified. From the factory, the modems are configured and shipped ready-to-use. Out of the box, they will communicate on the default radio channel using the factory defaults. In general, the parameters you may want to modify will be:

ATFX	Frequency for this channel. Set to your frequency.
ATBD	Serial port baud rate

ATMY	The ID of this unit. Default is 1234.
ATMK	The network address mask. Default is FFFF.
ATDT	The address of the unit this modem will talk to. Default is 1234.

6. Connect your serial data device to the 9-pin connector on the front of the modem.

The radio is now ready to use. Any serial data going into the modem will be transmitted over the air, and any data received over the air will be sent out the serial port.

Remember, that from the factory, all M7 modems are configured to simply work. Plug in power and connect to the serial port at 9600 baud, and the modems will communicate on the default channel. Change the channel frequency to your specific frequency, and they will be ready to work on your channel.

6.2 Programming Channels and Frequencies

The M7 modem has memory for up to 6 channels. A channel is a pair of frequencies, one for transmit and one for receive. They may be different or they may be the same. You may program any valid frequency into any channel number. To program a channel, perform the following steps.

1. Change to the channel you wish to program, using the **ATHP x** command, where x is the channel number.
2. Program the frequency for this channel x, using the **ATFT**, **ATFR**, or **ATFX** command. Note that the frequency may be entered in MHz as long as you use a decimal point. For Example, enter **ATFX 450.1** to set the channel frequency to 450.100MHz. Alternately, you may enter the frequency in hertz by entering **ATFX 450100000**. You must enter all of the zeros if you enter the frequency in hertz.
3. Review the frequency setting with the **ATFT**, **ATFR**, or **ATFX** command. To see a list of all of the channels, enter **ATF**.
4. To change the radio channel, use the **ATHP x** command while the modem is in the command mode.

6.3 Data Transmission

To transmit data, send one or more bytes of data into the serial port of the modem. When a full packet of data has been collected into the internal buffer of the modem, or when there is a pause in the data, the modem will automatically key its transmitter, and send the data over the air.

Serial Port Baud Rate

While the modem is transmitting, the user may continue to send more data into the M7. Because the buffers in the M7 are full-duplex, the serial port data rate and the over-the-air data rates are independent. The serial port baud-rates may be set slow to accommodate legacy equipment, or set at high-speed to minimize latency. The over-the-air data rate is usually 4800 baud for narrow-band channels, and 9600 baud for wide-band, although faster or slower rates may be used.

In Packet Mode, selection of the serial port baud-rate is important. As shown above, if the serial port baud-rate is the same as the over-the-air baud rate and the packets are short, the channel

utilization is only about 50%. But, if the serial port baud rate is set much higher, say 2-8X the over-the-air rate, the channel utilization becomes near 100%.

Because the M7 can handle serial-port data rate far in excess of the over-the-air rate, the efficiency of the M7 in Packet Mode is approximately the same as other brand modems that cannot operate in a Packet Mode — with the added benefit of ARQ, error-free data, and addressing.

Note that many Windows applications which use the serial port, such as HyperTerminal, put large gaps between the bytes of data they send out the serial port. If an application is not getting the desired throughput, verify that it is not an artifact of the Operating System or the computer.

Flow Control

If large amounts of data will be sent with the M7, it may be possible to overflow the internal data buffer. To ensure the transmit buffer does not overflow, enable and use hardware flow control. Hardware flow control is enabled with the **ATCH 1** command. Note that the M7 modem will always indicate the status of its internal buffer using the **CTS** signal on the DB-9 serial connector. When CTS is negated, the internal buffers are more than 80% full. When it is asserted and it is “Clear to Send”, the buffers are less than 80% full.

You can modify this CTS threshold with the **ATJF xx** command. If you would like CTS negated when there is 1 or more bytes in the M7's buffers, set **ATJF** to 1 (**ATJF 1**).

Packet Size

The over-the-air packet size may be set with the **ATTT xx** command. Once the modem receives one full packet of data into via the serial port, it will automatically key the transmitter and send the data. Factory default is 80 bytes. The M7 will also automatically send all of the data in its buffer when there is a pause in the incoming data stream, regardless of the **ATTT** setting.

Key-On_Data

When serial data is entering the M7's RS-232 port, the M7 looks for pauses in the data as indication that it is time to send a packet of data over the air. The factory default duration of the pause it looks for is 20mS, but the user may change this to other values using the **ATR3 xxx** command, where xxx is in milliseconds. **ATR3 2** (2mS) is a good setting if you are configuring the M7 for use in a polled SCADA system.

Busy-Channel Lock Out

If your system operation requires the M7 modem to monitor-before-transmit, or if you do not want the M7 to transmit on a channel that is busy, you can enable “Busy-Channel-Lockout”, using the **ATBC 1** command. **ATBC 0** disables BCL, and thus the modem will transmit whenever it has data to send out. The factory-default is BCL disabled. Use caution when enabling it, as a CW interferer, PC with poor shielding, or some other source of RF can stop the modem from transmitting. The threshold where the M7 senses RF carrier, and determines that the channel is busy is set by the **ATRA** command. This is factory calibrated to an equivalent RF level of approximately -110dBm.

6.4 Addressing (Packetized Mode only)

Addressing Basics

One of the more powerful aspects of the M7 modem is its addressing scheme. Incorporating addressing in the modem allows multiple radio systems on the same frequency to co-exist, and not

interfere with each other. Also, some user application cannot tolerate receiving data that was not intended for it, and by setting the addresses in the modems properly, the system can be configured to allow reception of only data intended for the recipient.

If addressing is not needed or desired, it can be turned off so that all modems receive data from all other modems, and all modems can talk to all other modems.

Each M7 contains a 16 bit address, called its Unit Address, and is represented as a 4 digit hexadecimal number. M7 address may be any number between 0000 and FFFF, which is effectively 65,535 different addresses. Every M7 has a Unit Address programmed into it, as well as the ID of the unit it will send data to. The Unit Address is programmed with the **ATMY xxxx** command, and the Unit Address of the destination modem (the Destination Address) is configured with the **ATDT xxxx** command.

The defaults UNIT ID in all M7 modems is 1234, and 1234 is the default for the destination ID. An Address Mask is used to select which digits of the address will be used to determine if a particular reception was intended for the M7 modem. The default Address Mask is FFFF, which means all digits will be used. With these settings, by default all M7s will talk to and hear all other M7 radio modems.

Group Numbers

By default the M7's Group Number is 0. Group 0 means ignore the group numbering. The Group Number is set with the **ATGP xx** command, where xx is the group number. **ATGP 0** disables group numbering and is the default way the M7 radio modem works. If the Group Number is set to any non-zero number from 1-255, then the group feature is enabled, and the group number will be the group specified in the **ATGP** command. When enabled, the M7 will only communicate with other M7s that have the same Group Number.

Hexadecimal Numbers

For those not familiar with hexadecimal numbers, a hexadecimal digit represents a 4-bit binary pattern. There are 16 possible values (0,1,2,3,4,5,6,7,8,9,A,B,C,D,E,and F). These 16 values represent 4 bits of information, thus 4 hexadecimal digits can represent 16 bits of information. The hexadecimal numbers represent 4 bit data in the following way:

Hexadecimal Table

<i>Hex #</i>	<i>Binary</i>		<i>Hex #</i>	<i>Binary</i>		<i>Hex #</i>	<i>Binary</i>		<i>Hex #</i>	<i>Binary</i>
0	0000		5	0100		8	1000		C	1100
1	0001		6	0101		9	1001		D	1101
2	0010		7	0110		A	1010		E	1110
3	0011		8	0111		B	1011		F	1111

When communicating over the air, M7 modems transmit their Unit Address and the Destination Address along with the data. Receiving modems check the received Destination Address, and see if it matches their Unit Address. If it does match, the receiving modem outputs the data it received via

its serial port. If it does not match, the receiving modem discards the data, and does not send it out the serial port.

Setting A System-Wide Address

If individual addressing is not needed in your system, there are two ways to ensure it is not used. One way is to set all modems in the system with the same Unit Address and Destination Address. From the factory, these are both set to 1234, and thus, all modems can communicate with all other modems, using the address 1234. The advantage of using this system-wide address, is that if there are other M7 modems on the channel, but in some other system, they probably will not have the same Unit Address, and thus will not interfere with your system. To reduce the possibility of data cross-talk, the system implementer may wish to use a different system-wide address for the Unit Address instead of 1234. There are over 65,000 addresses available.

An alternate way to disable addressing altogether, is set the Address Mask to 0000 (**ATMK 0000** command). This tells the M7 to ignore the address, and receive every transmission. The disadvantage to this method is the adjacent-system problem. If there is another M7 system on the same channel, all modems with the 0000 mask will receive them also.

A good idea is to start numbering all of your M7 with a Unit Address of 0001, 0002, 0003, etc... Set the address Mask to F000. This will let all M7s with ID's 0001-0999 talk to each other. If you want a separate group, start numbering them 1000, 1001, 1002, etc... Then the 1000 series group will only hear 1000 series M7's and the units that have IDs starting with 0xxx will only hear other radios with IDs that start with 0xxx.

Broadcast Transmissions

The double FF is used to identify a broadcast packet. A transmission with two digit FF in the first two positions of the destination ID, or in the last two positions of the destination ID, will be interpreted as a broadcast, and any modem with an ID that matches the two non-FF digits will receive the data. For example, sending data with a destination ID of 12FF will be received by any modem with a unit ID 1200 through 12FF. Sending data with a destination ID of FF34 will be received by any modem with a unit ID of 0034 through FF34.

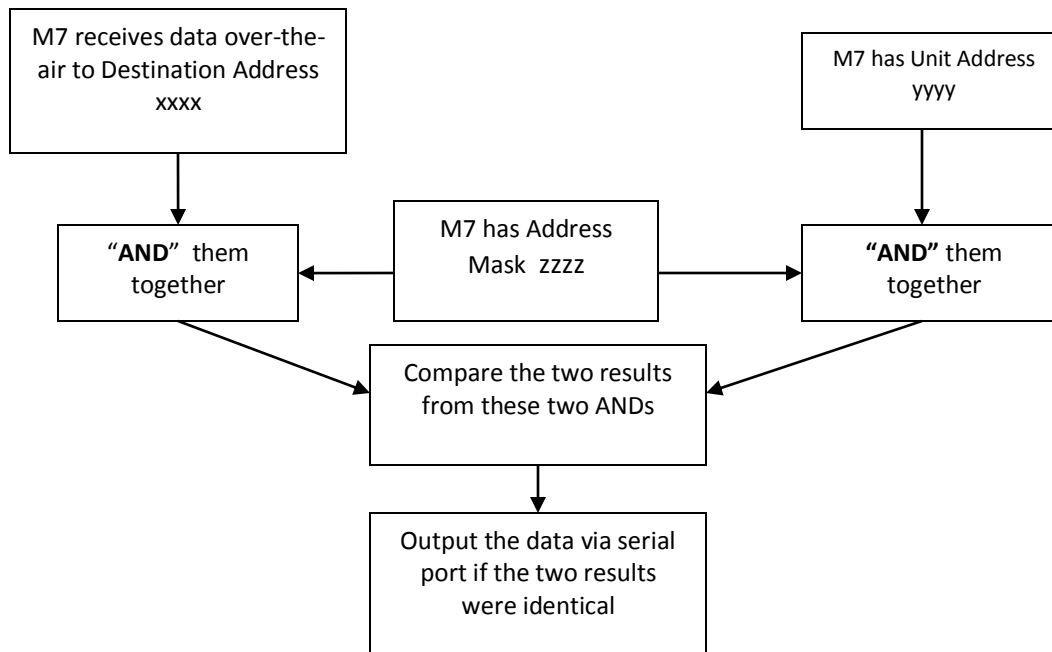
The Address Mask

The reason to use hexadecimal digits to represent the unit address, is that along with the Unit Address programmed into the M7, there is an "Address Mask" programmed into it. The default mask is FFFF. The address mask is used to determine if a particular data transmission should be received by the modem. For most applications, where one modem talks to one modem, or where all modems in the system communicate with all other modems in the system, the Address Mask should stay set to FFFF.

Only in systems where some modems should only talk to certain other modems, might you want to change the address mask. Whenever data is received over the air, the Destination Address of the transmission is logically "ANDed" with the Address Mask in the receiving modem. This is the *Effective Destination Address*. The receiving M7 also ANDs its own Unit Address with its Address Mask. The result is the *Effective Unit Address*. The *Effective Unit Address* is compared to the *Effective Destination Address*, and if the two are identical, the data will be received.

Note: Logically 1 AND 1 = 1, 0 AND 0 = 0, 1 AND 0 = 0, 0 AND 1 = 0

Figure 2 (Address Filtering)



One effect of this is that an address mask of 0000 will cause the M7 modem to receive any data from any unit that transmits. The Destination Address will effectively be ignored and all data received if the mask is set to 0000.

Listen Address (Version C21 and higher firmware):

In modems with version C21 and higher firmware, which began shipping April 2011, there is another addressing option called the "Listen Address". The Listen Address is a second ID programmed into the radio, that the unit will listen for. The Listen Address is configured using the **ATLA xxxx** command.

If the Listen Address is set to FFFF, then this feature is ignored, and FFFF is the factory default so by default the M7 does not use the Listen Address. If you would like an M7 to transmit using ID 1234 but also be able to receive data sent to ID 5555 then you could set the **MYID** to 1234 (**ATMY 1234<enter>**) and the Listen Address to 5555 using the ATLA command (**ATLA 5555<enter>**)

The Listen Address gives the radio the ability to receive data sent to a second ID, set with the **ATLA xxxx** command.

Addressing Examples:

Example 1 (default configuration)

Sending Destination Address = 1234

Receiving Unit Address = 1234

Receiving Unit's Address Mask = FFFF

Result: Unit will receive the data, because the addresses identically match. When the addresses are identical, the value of the mask is not important.

Notes: This is the default configuration. All units have address 1234, and all modems will talk to all other modems with address 1234.

Example 2 (a configuration that won't work)

Sending to Destination Address = **1236**

Receiving Unit Address = **1234**

Receiving Unit's Address Mask = **FFFF**

Result: No data will be received, because the address do not match, and the address mask of FFFF requires that all digits in the address match. .

Example 3 (able to receive a data from a group, 1230 – 123F)

Sending to Destination Address = **1236**

Receiving M7 Unit Address = **1234**

Receiving M7 Address Mask = **FFF0**

Result: Data will be received. 1236 ANDed with FFF0 is 1230. 1234 ANDed with FFF0 is 1230. The results of the ANDing match, and thus the data will be received.

Example 4 (able to receive from a group, xx34 where xx is any two digits)

Sending Destination Address = **2234**

Receiving M7's Unit Address = **1234**

Receiving M7's Address Mask = **00FF**

Result: Data will be received. 2234 AND 00FF equals 0034. 1234 AND 00FF equals 0034, therefore they match. The results of the ANDing match, and thus the data will be received.

6.5 Error Correction

The M7 modem has a built-in error correction mode, commonly referred to as *Automatic Repeat request (ARQ)*. It works by checking each reception for errors, and if the data is OK, it sends a short "ACK" packet back over the air telling the sending station the data was OK.

The M7 modem uses a traditional Carrier Sense Multiple-Access (CSMA) algorithm with randomized re-try time slots to determine when to re-transmit packets that must be re-sent. The duration between re-tries increases as the number of attempts increases.

If received data has an error in it or if the receiving modem does not get the data due to interference, the receiving modem does not send the ACK back, and the sending station will automatically re-send the data. There are two aspects to configuring ARQ:

- a. Enable the ARQ mode in the modem to allow it to transmit ACKs (**ATAK 1** command). This command enables the modem to transmit ACK packets.
- b. Configure the number of retries the modem should attempt if an ACK packet is not received back when it sends data (**ATRB xx** command). For example, if you set **ATRB** to 5 with the **ATRB 5** command, the modem will wait for an ACK whenever it sends data. If it receives an ACK back from the modem that it sent data to, it will do nothing more. But if it does not receive an ACK, it will resend the same data, trying up to 5 more times.

The factory default condition is not to send or require ACK packets, so if you wish to use this mode, program the M7 to transmit ACKs with the **ATAK 1** command. This will cause the modem to send an ACK anytime it receives data from another modem. Note: If the destination address was a broadcast (FFFF, FFxx, or xxFF), it will not wait for an ACK.

The number of times it retries to send data that does not get through (does not get an ACK) is up to the user, but a number of 5 is usually a good compromise. If after 5 times, the data does not get through, then there probably is something seriously wrong with the channel or system.

The retried-transmissions are randomly spaced at intervals between approximately 200mS and 400mS, increasing by 50mS for each attempted transmission. Once the modem has sent its data the number of times the user specified in the **ATRB xx** command, the data is discarded, and the modem will continue to operate as normal.

It is very important that if one modem is configured to send ACK packets (**ATAK 1**) that all other modems communicating with it are also set to expect ACK packets using the **ATRB xx** command.

To disable ARQ (the default condition of the modem), disable ARQ with the **ATAK 0** and set retries to zero with the **ATRB 0** command.

6.6 Store-and-Forward Repeating

The M7 modem has a built-in wireless repeater. Each M7 is capable of not only sending and receiving data from/to its serial port, but also re-transmitting data packets it receives over-the-air data.

Automatic Repeater Configuration

The easiest way to enable store-and-forward repeating is the use the **REPEAT 1** command. **REPEAT 1** will turn on the store-and-forward feature, and configure it to repeat all packets the radio can hear on the air. **REPEAT 0** disables store-and-forward repeating.

It is highly recommended that you use this method to configure your M7 as a repeater.

Important: The Unit ID of the repeater must be unique in the system. No other radio modem in the system can have the ID of the repeater.

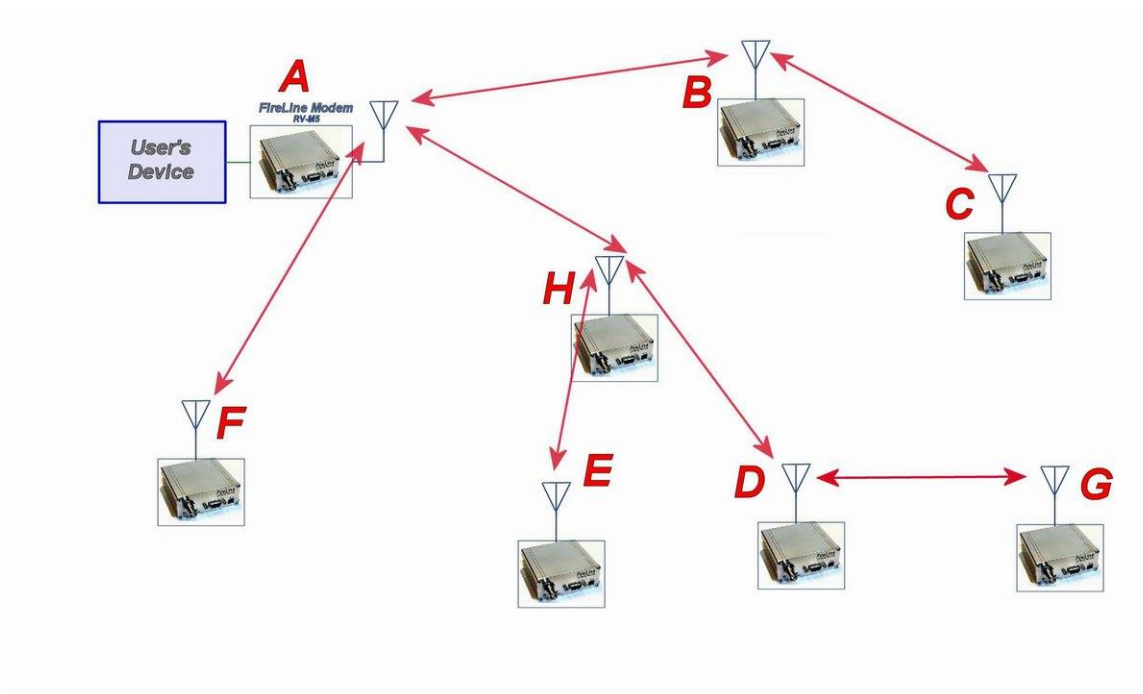
Manual Configuration of the Repeat Feature

There is a sophisticated packet repeating algorithm in the M7, and it may be manually configured for more complex repeating scenarios. In most cases this is not needed. Simply use the **REPEAT 1** command. But, if you do not wish the repeater to repeat all packets, you may manually configure the Repeater Table within the M7. The Repeater Table is a table of IDs that the M7 should repeat. It contains a range of IDs and a mask. There may be up to 4 entries in the Repeater Table, each with a different range of IDs that should be repeated.

Important: The Unit ID of the repeater must be unique in the system. No other radio modem in the system can have the ID of the repeater.

Data is transmitted over-the-air in bursts called packets, and each packet has the Unit ID of the M7 that sent the data and the Destination ID of the unit that the data is intended for.

Figure 3 Overview of Repeater Operation



In the example shown in Figure 3 above, M7 **A** will communicate with all other modems in the system. It can directly communicate with **B**, **H**, and **F**. Because of propagation limits, it cannot communicate reliably to **E**, **D**, **C**, and **G**.

To solve this problem, some of the M7 modems are configured as repeaters. They still are able to send and receive data, but they also will repeat data out to the modems that are out of range of M7 **A**.

H is configured to repeat all messages to/from **E**, **D**, and **G**. **B** is configured to repeat all messages to/from **C**, and **D** is configured to repeat all messages to/from **G**.

The following table illustrates one possible way the M7s could be programmed to accomplish this type of system.

M7	Unit ID (ATMY)	Destination (ATDT)	Network Mask (ATMK)	Repeat Source	Repeat Source Mask	Repeat Destination	Repeat Destination Mask
	Addresses programmed into unit			Repeater table programmed into unit			
A	1000	1000	FF00	-	-	-	-
B	1010	1000	FF00	1020	FFFF	1000	FFFF
				1000	FFFF	1000	FFFF
C	1020	1000	FF00	-	-	-	-
D	1030	1000	FF00	1031	FFFF	1000	FFFF
				1000	FFFF	1000	FFFF
E	1032	1000	FF00	-	-	-	-
F	1021	1000	FF00	-	-	-	-
G	1031	1000	FF00	-	-	-	-
H	1022	1000	FF00	1030	FFFF	1000	FFFF
				1000	FFFF	1000	FFFF

Store-and-forward repeating is manually enabled with the ATXR command. **ATXR 1** enables repeating. **ATXR 0** disables it. Unlike the **REPEAT x** command which configures the repeater table to repeat all packets, the **ATXR 1** enables the feature but does not configure the Repeater Table.

The *Repeat Source*, *Repeat Source Mask*, and the *Repeat Destination* are programmed into a Repeater Table in the M7. The ATX command is used to program the Repeater Table. The Repeater Table may have up to 4 entries.

For example, M7 **B** in the above example will have two entries in its Repeater Table. The command to set the two entries is:

ATX1 1020 FFFF 1000 FFFF
ARX2 1000 FFFF 1000 FFFF

The first command above sets the Repeat Source to 1020 and the Repeat Destination to 1000, both with a Mask of FFFF. The FFFF mask means all digits of the source and destination are used to determine if the transmission should be repeated. All packets from units with MYID 1020 (**C**) sent to 1000 will be repeated by this unit. It will not repeat messages from **D, E, F, G, or H** because their Unit IDs are not in the *Repeat Source* repeater table.

The second command above sets the Repeat Source to 1000 and the Repeat Destination to 1000, both with a Mask of FFFF. The FFFF mask means all digits of the source and destination are used to determine if the transmission should be repeated. All packets from units with MYID 1000 (**A**) sent to 1000 will be repeated by this unit. In other words, all transmissions from **A** will be repeated by **B**.

To view the Repeater Table, use the **ATX** command, with no parameter. To view a single entry in the table, use the **ATXn**, where n=1, 2, 3, or 4.

To delete an entry in the table so it has no effect on the operation, set the fields to 0. For example, to disable entry 1, use the **ATX1 0 0 0 0** command.

There can be an issue with regard to store-and-forward repeating and busy channels, particularly on polled systems. Raveon's M7 wireless modem has a number of provisions in it to make store-and-forward repeating work smoothly.

For example, in the diagram above, assume A is the master station, and C is a remote station being polled. When the store-and-forward repeater B sees a packet it should repeat, immediately upon reception of the packet, it keys its transmitter and repeats the packet. The scenario that can cause problems is if the end receiving station C actually heard the original transmission from A. In a polled scenario, the end station C will typically then respond to the poll, and want to transmit. Station C's transmission can happen at the same time as the repeater B is trying to repeat the original transmission.

This contention can be reduced/eliminated in the following ways:

1. Turn busy-channel lock-out on (**ATBC 1**) on all modems. This stops them from transmitting on a busy channel (stops them from transmitting when the repeater is transmitting).
2. Set the serial port baud-rate on the end-stations to be fairly slow (**ATBD x**). Thus, when they receive a poll request, there is a delay as they send data in/out of their serial ports, and during this delay, the repeater can do its thing.
3. Increase the serial port time-out value from 20mS to say 250mS (**ATR3 250**). Then, when the polled station responds, there is a 250mS delay before the end station's data gets sent out over the air. This gives a little gap for the repeater to use for repeating messages.
4. Any combination of 1-3.

M7 radio modems will not repeat or receive duplicate versions of the same data packet. If two repeaters are used in the same system, each will repeat a transmission only one time, even if they are within communication range of each other. A repeater will not repeat a transmission if it was the originator of the transmission. If another M7 in the system has the same ID as the repeater, the repeater will not repeat data from that particular unit. The repeater's ID must be unique in the system.

If a M7 is configured as a repeater, and is also used to send and receive data, it will not repeat any transmission that it originated. M7 check the ID of the station that originated the transmission to determine if the message should be repeated. If the transmission was originated by a station with the same Unit ID as the Unit ID in the receiving station, the data will not be repeated. This is why it is important to have a different ID for each M7 modem in a network that uses repeaters.

7. Using the M7 Modem – Streaming Mode

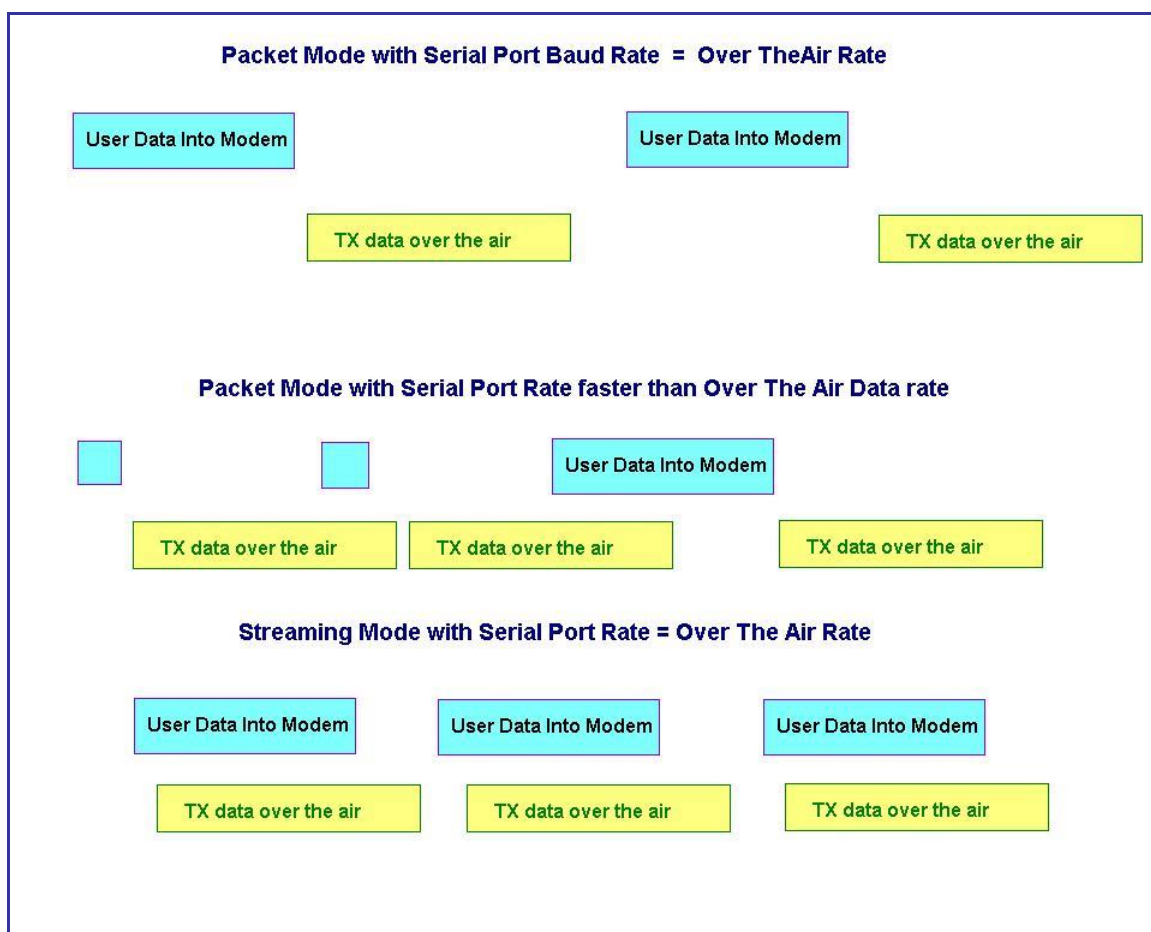
This section describes the operation of the Streaming Mode of operation. This mode is selected with the command **ATMT 2**.

7.1 Streaming Mode Operation

In Streaming Mode, radio transmissions will begin whenever data enters the mode, and the transmission will continue as long as there is data to send. The transmitter will automatically key when data enters the modem, and there is no need to assert any control lines. It will automatically de-key when there is no more data to send.

Figure 3 illustrates the difference between the Packet Mode and the Streaming Mode of operation.

Figure 4 (Streaming Mode of Operation)



7.2 Baud Rate Selection

In Streaming Mode, the user data may still enter the modem at any baud rate, as set with the **ATBD x** command. The M7 modem will buffer the data and send it out over the air in the same order as it

enters the modem. When the buffer is empty and there is no more data coming into the modem, it will automatically de-key the radio and go back into the receive mode. The M7 modem will send a hidden end-of-message signal to the receiving modem, thus avoiding any extra data bytes “dribble bytes” from coming out of the user serial port. When the modem is operating with very weak signals, the end-of-message signal may be obscured, and missed by the receiving M7. In this case, additional noise bytes may come out of the user serial port.

While receiving, the modem will also output the receive data out the serial port at the rate set by the **ATBD** command. If the serial port baud-rate is slower than the over-the-air rate, an internal buffer in the M7 modem will hold the data as it is sent out the serial port.

7.3 Bit Errors

Unlike Packet Mode operation, there is no error-detection nor error-correction in the Streaming Mode, so user data may contain bit errors. The user’s application must be able to handle these errors or additional bytes of noise data.

If the application that is using the M7 cannot tolerate have erroneous data when the channel is noisy, the modem should be operated in the Packet Mode instead of Streaming mode (In Packet Mode, data is always first checked for bit-errors, and never outputted if it detects any errors).

The end of a transmission is detected by the receiving modem by the presence of a special end-of-message signal. Transmitting M7s automatically put the end-of-message signal out after the user’s data has been transmitted. If the receiving modem does not receive this signal (due to noise or interference), the receiving modem may continue to output some more data, until it detects that the RF carrier is gone, or the received signal is actually noise. This may take a byte or two of time, and during this time period, the receiving modem may output random noise bytes.

7.4 Carrier Detect

To reduce bit errors and additional noise bytes, the user may configure the M7 to require and RF carrier Detect before receiving any data. Because the RF carrier Detect Threshold is set above the noise-floor of the receiver, bit-errors will be rare if RF carrier is required to receive. By default, the M7 does not require RF carrier detect to receive. To enable it, use the **ATRF 1** command. To disable the need for RF carrier detect, us the **ATRF 0** command (Factory default).

When **ATRF** is **0**, the modem will be more sensitive, and be able to receive weak signals, but there is more likely to be many bit errors when the signals are weak.

7.5 Serial Data Flow Control

If large amounts of data will be sent with the M7, and the serial port is operated at a faster data rate than the over-the-air rate, it may be possible to overflow the internal data buffer. To ensure the transmit buffer does not overflow, enable and use hardware flow control. Hardware flow control is enabled with the **ATCH 1** command. Note that the M7 modem will always indicate the status of its internal buffer using the CTS signal on the DB-9 serial connector. When CTS is negated, the internal buffers are more than 80% full. When it is asserted and it is “Clear to Send”, the buffers are less than 80% full.

7.6 Setting the Over-The-Air Data Rate

The M7 has programmable over-the-air baud rates. The over-the-air rate is stored in register R2, and is programmed with the **ATR2 x** command, where **x** is a number corresponding to the rate. There are many possible baud rates, but not all rates may be used with all radio modem models. Consult the following table.

<i>Over-the-air rate</i>	<i>Radio Bandwidth</i>	<i>Number of Modulation Levels</i>	<i>M7 Modem Models that support the rates</i>
800bps (R2=0)	12.5kHz or 25kHz	2	RV-M7-UC-N, RV-M7-UC-W
1200bps (R2=1)	12.5kHz or 25kHz	2	RV-M7-UC-N, RV-M7-UC-W
2400bps (R2=2)	12.5kHz or 25kHz	2	RV-M7-UC-N, RV-M7-UC-W
4800bps (R2=3) Default setting	12.5kHz or 25kHz	2	RV-M7-UC-N, RV-M7-UC-W
8000bps (R2=4)	12.5kHz or 25kHz	4	RV-M7-UC-N, RV-M7-UC-W
9600bps (R2=5)	25kHz	2	RV-M7-UC-W only
19200bps (R2=6)	25kHz	4	RV-M7-UC-W (will not work with Radio Type 5)
5142bps (R2=7)	12.5kHz or 25kHz	2	RV-M7-UC-N, RV-M7-UC-W, RV-M7-UC-S
9600bps (R2=8)	12.5kHz or 25kHz	4	RV-M7-UC-N, RV-M7-UC-W

Changing the over-the-air data rate will change the sensitivity of the receiver. Higher-data rates require a stronger signal at the receiver to be properly received. The default over-the-air data rate for M7 radio modems is 4800 baud for narrow-band versions, and 9600 baud for wide-band versions.

The maximum over-the-air baud-rate for a narrow-band radio (12.5kHz channel-spacing) is 9600bps. Due to IF filter limitations, the M7 does not work as well at 9600 baud as some other rates. Its performance is optimized for 4800 baud 2-level modulation and 8000 baud 4-level modulation.

The maximum over-the-air baud-rate for a wide-band model (25kHz channel spacing) is 19200bps. Due to IF filter limitations, it does not work as well at 19200 baud as lower data rates. Its performance is optimized for 9600 baud 2-level modulation.

RV-M7-UC (narrow-band version)

Factory default, set R2 to 3 (4800 baud).

For **high-speed operation**, set R2 to 4 (8000 baud).

For **best range** (longest distance), set R2 to 1 (1200 baud)

Other data rates of 0(800bps), 2(2400bps), 3(4800bps), and 7(9600bps) will work, but have a less optimal bit-error-rate vs. receive sensitivity.

RV-M7-UC-W (wide-band version)

For **high-speed operation**, set R2 to 5 (9600 baud).

For **best range** (longest distance), set R2 to 1 (1200 baud)

Other data rates of 0(800bps), 2(2400bps), 3(4800bps), 7(9600bps), and 6(19,200bps) will work, but have a less optimal bit-error-rate vs. receive sensitivity.

8. Installation

1. Secure the M7 modem using the four mounting holes on the side flanges of the unit.
2. Connect a DC power source to the DC IN connection on the front of the modem. Use the supplied cable, and connect the RED wire to +, and the black wire to – (ground). The black wire and the case of the M7 should be connected to earth ground.
3. Connect a good quality antenna, tuned to the operating frequency, to the RF connector on the front of the modem. Use a good antenna, and place it as high-above obstructions as possible.
4. A separation distance of at least 20 centimeters must be maintained between the transmitter's radiating structures and the body of the user or nearby persons.
5. Connect the computer, terminal, controller, or other hardware device that will be using the M7 modem to its DB-9 serial I/O connector using a shielded cable. Secure it to the M7 with the two mounting screws on the sides of the DB-9 connector.
6. If the antenna is mounted out doors, use a lightning arrestor in-line with the antenna, and properly ground the antenna and the M7 chassis to an earth ground.

9. FCC Licensing Information

M7 radio modems operate on radio frequencies that are regulated by the Federal Communications Commission (FCC). In order to transmit on these frequencies, you are required to have a license issued by the FCC.

Almost everyone engaged in public safety activities - as well as private organizations, are required, to obtain a radio station license from the Federal Communications Commission if they wish to use a radio transmitter.

The FCC will help you through the licensing process.

You can find the basic information you need to begin the process at the FCC website. If you are engaged in public safety activities, you can go directly to:

<http://wireless.fcc.gov/publicsafety>

If you are a business, commercial, or institutional organization, you can go directly to:

http://wireless.fcc.gov/services/index.htm?job=service_home&id=industrial_business

In either case, you will be shown the regulations and the information you will need to gather before you get started - your desired operating frequencies, wideband/narrowband, antenna type and size, power/wattage, etc. You'll also get information on how to obtain the necessary application forms - either in hard-copy or electronic format - and how to proceed.

The FCC website also offers a list of Frequency Coordinators. These are private organizations officially certified by the FCC to help you through the process, and who in most cases will handle the actual filing of your application. With few exceptions, you must apply for an FCC license through a Frequency Coordinator. They are located throughout the country, making it easy for you to find one that is familiar with radio operations in your area.

There are companies who specialize in assisting with licensing radio modems. You may consider contacting one of the following:

Atlas License Company and Data Services

1-800-252-0529

<http://www.alcads.com>

Airwaves Licensing

1-717-334-0910

<http://www.airwaveslicensing.com>

10. Debug Related Commands

1.1.1.1 Bench Testing

(Must be in command mode to test. Enter +++ at the keyboard to put unit into config/test mode.)

ATTD x	Various transmit test routines. 0 = Go back to normal mode. Stops the test. 1 = Random data transmit. 2 = Hop up/down one channel 3 = Force PLL to fast lock mode 4 = Transmit all 0s 5 = Transmit all 1s 6 = Enable the test points on the PCB. 7 = Transmit CW on center of channel 8 = Transmit preamble (101010 pattern)
SHOW	Display an overview of the configuration.
Ping xxxx	Ping another modem over the air. Transmits a request to xxxx to see if xxxx can hear the sending station. If it does, it answers with a response transmission, containing its ID and the signal strength of the reception. .
ATST	Display statistics of how the modem is working.
ATST 1	Display statistics of how the modem's GPS is working (if installed).
AT\$5	Display RSSI. It will scroll the reading until another character comes in the serial port.

1.1.1.2 Packet Counter

The packet counter mode will output packet count statistics once per minute. It will output the number of packets received in the last minute as well as the running total. T

ATPE Begin counting and displaying the packet counters every minute

ATPE 1 Reset the packet counters back to zero

ATPE 2 Stop counting and displaying packet counters

Upon power up, the packet counter feature is always disabled.

11. M7 Diagnostic Provisions

11.1 Overview of Diagnostics

Internal to the *M7* radio modem, is a powerful 32-bit microprocessor. Along with handling all aspects of radio modulation and demodulation, the microprocessor also maintains an extensive array of diagnostic information.

This section details the diagnostic information available, and describes how to use the information to optimize or troubleshoot a *M7* radio network.

11.2 Reading the Diagnostic Information

M7 diagnostic information is read using AT commands, while the unit is in the Command Mode. Refer to the section “User Serial Port Commands” to learn how to put the *M7* modem into the Command Mode.

To see a general overview of how the modem has been operating, use the **ATST** command (status request command), without any parameter. The radio modem will respond with a list of certain operation statistics that it maintains. All statistics start counting at 0. The **ATST 1** command can be used to reset all statistics back to 0, except the run-time timers.

Other operation and configuration statistics are available using the ATST command, with a parameter to specify the desired statistic. The following table describes the various statistics available.

11.3 Status and Statistics Command

AT Command	Command Description	Response
ST	General Communication Statistics – This command will cause the <i>M7</i> to output a table of various operational statistics.	Statistics overview screen
ST1	GPS Statistics – Statistics related to the GPS operation, if installed.	GPS Statistics overview screen
ST2	Low-level internal statistics – Returns various low-level statistics. These are subject to change in various firmware revisions.	Low-level statistics screen
ST3	Compile date and time – Returns the data and the time that the firmware was compiled.	Date and time
ST4	Run Time – Returns the amount of time that the modem has been powered up and running.	Run time display screen



ST9 **Reset all statistics counters**

OK

ST10 **Statistic Read** – Returns numeric values, comma separated, of all statistics as described in the ST command.

Run time display
screen

11.4 ATST Command

The ATST command, will return the following information:

```

STATISTICS
Good RX Packets   : nnn  (packets received over the air with no bit-errors and correct address)
With Bad CRCs     : nnn  (over-the-air packets with bit errors that were discarded)
With Bad Noise    : nnn  (receptions that were aborted due to noise, CW jamming, lost signal...)
Bytes received    : nnn  (number of bytes this modem received, and sent out its serial port)
Bytes transmitted: nnn  (number of bytes this modem received via the serial port, and
                           transmitted over the air)

Packets send      : nnn  (number of packets this modem has transmitted over the air.
                           Retransmissions in the ARQ mode are not counted)

ACKs received     : nnn  (Number of ACK packets this modem received, when ARQ was
                           enabled)

ACKs transmitted  : nnn  (Number of ACK packets sent over-the-air in the ARQ mode)
Pkts last minute  : nnn  (Number of packets received during the last minute)
UART errors       : nnn  (serial port framing and overrun errors. Usually these are caused by
                           incorrect serial port settings)

OK

```

If there is a hardware problem, there may be one or more hardware error messages listing the error types (CPU Exceptions, OS Rebooted, or Fatal OS failures). Consult the factory if any of these messages ever appear.)

11.5 ATST2 Command

The ATST2 command, will return additional lower-level statistics:

```

RF FIFO overruns : nnn  (number of times the modem was too busy to receive data over-the-air)
Wrong address     : nnn  (packets with addresses intended for some other unit. Also will count
                           apparent false packets due to random noise)

Duplicate packets: nnn  (number of packets discarded because they already were received, and
                           subsequently re-received due to ARQ mode or a repeater)

Missing ACKs      : nnn  (number of transmissions in ARQ mode, where this sending M7 did not
                           receive an ACK back as it expected to)

TX FIFO overflows: nnn  (number of bytes of data that came into the M7 over-the-air, and there
                           because there was no buffer space for the data, were discarded. If
                           greater than 0, the serial-port baud-rate should be increased. )

RX FIFO overflows: nnn  (number of bytes of data came into the M7's serial port, and there was
                           no room in the M7 to buffer the data before transmission, so these
                           bytes were discarded. If greater than 0, flow-control should be enabled,
                           hardware flow-control implemented, or the serial-port baud rate
                           reduced.)

OS loop time      : nnn  (number of times OS executes, per baud. Typical 10-200. 0 or >5000
                           means there is a serious OS problem).

OS Speed          : nnn  (speed of the main Operating System, in Hz. Typical 8000-30000. )
VCO Bias          : nnn  (the DAC value that biases the VCO in the radio. 0-1024 = 0-3.3V)
Config           : hhhh (hexadecimal representation of an internal configuration word.)

OK

```

11.6 ATST3 Command

The ATST3 command, will return the time and date the firmware in the M7 was compiled.

11.7 ATST4 Command

The ATST4 command will return internal timers that tell how long the modem has been powered up and running. All of these timers restart a 0 upon power up.

```
Run time:
Years: nnn (number of years running)
Days : nnn (number of days running, resets to 0 after one year)
Hours: nnn (number of hours running, resets to 0 after 23 hours, 59 minutes, 59 seconds)
Min:   nnn (number of minutes running, resets to 0 after 59 minutes, 59 seconds)
Sec:   nnn (number of seconds running, resets to 0 after 59 seconds)
Uptime: nnn (number of seconds running. Does not reset.)
OK
```

12. Tune-up and Alignment

Do not key the transmitter for more than 30 seconds out of every 150 seconds if the RF power is set above 2 watts.

The M7 modem has been factory calibrated, in should not require any re-calibration when installed, or when changing frequency or channel. Unless the user is trained in radio test and calibration, the values stored in the R registers should not be modified. Radio calibration and alignment is performed using the **ATRx** commands.

Improper adjustment of the radio calibration (R0-R9 and RA registers), can result in failure of the radio modem.

Calibration and alignment values are stored internal to the modem in the “R” registers. (R0-R9 and RA). For example, to read R5, issue the **ATR8** command without any parameter. To change the setting, issue the **ATR8 nn** command, where nn is the new value you would like to store.

Once you read a register using an ATRx command, you may modify its value by entering a “U” for up or a “D” for down. U or D will change the value by one. Use this trick carefully, because it modifies the last R register that was read, and it is easy to unintentionally modify the wrong register.

12.1 Periodic Calibration

The only setting that may require adjustment is the center frequency. After years of operation, all crystals will age and change frequency slightly. The ATR8 command is used to adjust the center frequency. Like all narrow-band radios, semi-annual checks and adjustment of frequency is recommended.

12.2 Calibration Commands

The following AT commands are used to calibrate the M7. Do not ever change these unless you have been factory trained to do so.

AT Command	Command Description	Parameters	Factory Default
R0	Symbol Peak Deviation – Set the peak FM deviation of the transmit symbols. Note: This can be a negative number to invert the modulation.	Range: -1000 – 1000	120**
R1	Select CD pin output signal – CD may be RF carrier detect, or modem data detect.	Range : 0 - 2 2 = Always assert CD 1 = Data CD 0 = RF CD	1
R2	Over-The-Air bit rate - This is the data rate the radio uses to send data over the air. All RF modems in the network must use the same over-the-air baud rate. Refer to section 7.6 for information on how to set the OTA baud rate.	Range: 0 = 800 5 = 9600 2L 1 = 1200 6 = 19200 4L 2 = 2400 7 = 5142 2L 3 = 4800 8 = 9600 4L 4 = 8000 4L 9 = 2000 2L	3
R3	Serial Port time out – Number of mS of no activity on the serial port before transmitting the data in its buffer.	Range: 1 - 5000	20 (mS)
R5	Preamble length – The number of bytes to send over-the-air in the pre-amble.	Range: 3 - 255	4** (Varies based on data rate and radio type. 7 typical)
R8	Frequency Offset. Used to set the radio on the center of the radio channel.	Range: -500 to +500	0**
R9	Modulation Balance.	Range: 0-100	20**
RA	Select RF CD output threshold – This value is the RSSI threshold where the carrier detect is asserted. Note: To force CD always on, set this to 0, and R1 to RF Carrier Detect.	Range : 0-999	300**

12.3 Center Frequency

1. Key the transmitter with CW output using this command:
ATTD 7

2. The modem will now put out CW on the center of the channel.
3. Read the frequency offset with the **ATR8** command.
4. Adjust the frequency to the center of the channel with the **ATR8** command. You can use the "U" key and the "D" key to change the settings up and down one value in real time.

12.4 TX Deviation

1. Switch to channel 1.
2. Key the transmitter into a 50 ohm load using the **ATTD 3** command. The unit will now transmit, and send a digital 0 continuously. This should be +2.0kHz in frequency for narrow-band radios (12.5kHz spaced channels) and +4.0kHz for wide-band (25kHz channels).
3. Adjust the deviation register setting so that the frequency deviation is correct. The deviation is set with a digital adjustment. Use the **ATRO** command to read or set the deviation level.

12.5 TX Modulation Balance

(Note: This step is not performed on radios with Radio Type 5)

1. Set-up a service monitor to monitor the FM deviation of the transmitted signal on an oscilloscope. The frequency response of the demodulated FM signal must be greater than 10Hz to 5kHz without any de-emphasis.
2. Transmit random data on the center of the band, using the **ATDT 1** command. This command will cause the M7 to automatically key up, and send random data for one minute.
3. Verify the DC center of the demodulated data is stable. The random data should be randomly timed 1s and 0s, and have little to no AC component on them. See pictures below for details.
4. If necessary, change the **ATR9** setting so that the long data bit have the same amplitude and DC value as the shorter ones.
5. On the low end of the band, adjust **ATRL** so that the modulation is proper.
6. On the high end of the band, adjust **ATRH** so that the modulation is proper.

12.6 RX Carrier Detect

The DCD signal from the modem may be generated by detection of RF, using an internal signal called RSSI (Receive Signal Strength Indication). The RSSI signal is an analog signal representing the strength of the RF carrier. It is compared with a pre-set value, and if it is above this value, Carrier Detect is asserted. The pre-set value may be change with the **ATRA** command.

13. SkyLine Compatibility

13.1 General

The M7 RF modem has built-in compatibility with a radio modem made by Sonik Technologies, Vytex Wireless, and Cal Amp called the *SkyLine*. In most applications, Raveon's M7 modem can communicate with *SkyLine* modems, provided the M7 is properly configured. There are two versions of the Skyline, a wide-band version running at 9600 bps over the air, and a narrow-band version running at 5142bps over the air.

13.2 Configuring M7 to Communicate with a SkyLine

To configure the M7 modem to talk to an old *SkyLine* modem, the user must configure the M7 with these commands:

ATR2 7	This command tells the M7 modem to operate with an over-the-air baud rate of 5124 bits per second. This is the baud-rate of all narrow-band (12.5Khz spaced) SkyLine radio modems. Wide-band SkyLine radios operated at 9600 baud over the air. The command to set the M7 to 9600 baud over the air is ATR2 5 .
ATR5 8	This command tells the M7 modem to send 8 bytes of pre-amble before every transmission.
MYID 1234	The MYID of the M7 modem is set with the ATMY command or the MYID command. The default MYID of the SkyLine was 1234.
TOID FFFF	The TOID of the M7 modem is set with the ATDT command or the TOID command. The default TOID of the SkyLine was FFFF (broadcast address).

A quick-configure command is included in the M7, to allow it to be easily switch to the M7 mode. The command is "**SKYLINE**". When in the configuration mode, enter **SKYLINE**, and the modem will reconfigure itself as a narrow-band SkyLine modem, with **TOID = FFFF**, **MYID=1234**, 80 byte packets, 20mS serial port time out, channel 1 frequency, over-the-air baud rate 5142.

14. Antenna Information

Key to a successful installation is the choice and installation of a good antenna system. A good quality antenna can more than double the range of a radio system. Properly locating the antenna is vital to creating a quality radio link, and a poor installation can decrease the range of the system by as much as 90%.

Use these guidelines to evaluate your antenna system design, and be sure contact a quality radio communication equipment distributor such as *Talley Electronics* (<http://www.talleycom.com>) to help choose the proper antenna for your system.

To increase your communications range, located the antenna high as needed, practical, safe, and allowed by your license. On fixed base-station applications, you may utilize an antenna with gain.

Note: The maximum Permissible Exposure (MPE) for this product was computed using a 0dB gain antenna, and must be recalculated if a gain antenna is used.

Height

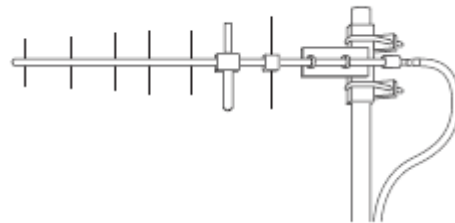
Try to locate the antenna as high above obstructions, vehicle, and buildings as possible. UHF and VHF radio channels require a clear “line-of-sight” between the transmitter and the receiver. Radio waves will penetrate buildings, and reflect off and around obstacles, but the fewer obstacles between stations the better the signal quality.

Gain

Antennas are specified by their gain. They actually do not have gain, but rather they can increase the strength of a signal in certain directions, at the expense of attenuating signals from other directions. Gain antennas always have “patterns” of gain. It is important you understand the pattern of your antenna. Omni directional antennas will receive from almost any angle, 360 degrees around them.



Omni Antenna



Directional Antenna

15. Appendix A. Serial Port Hardware

15.1 Serial Port Data and Handshaking Signals

In computer terminology, the RF modem is considered a “Data Communications Equipment” device, or DCE. The user’s hardware that the modem is connected to is considered “Data Terminal Equipment”, or DTE.

Following is a description of how data and control is communicated over the various serial port signals between the modem (DCE) and another device (DTE) that the modem’s I/O port is connected to.

TxD (INPUT)

This line is used to transmit data from the DTE to the DCE. It is maintained at a logical 1 state when nothing is transmitted. If Hardware Flow Control is enabled in the modem, the terminal will start to transmit data to the modem when a logical 1 is present on all of the following lines:

- Clear To Send (output from modem)
- Request to Send (output from the DTE)

RxD (OUTPUT)

This circuit is used to receive data from the DCE to the DTE. The modem will start to transmit data to the DTE when a logical 1 is present on all of the following lines:

- Data Terminal Ready (reply that it is OK to send)
- Data Set Ready (asserted by the modem)

RTS

On this line, the DTE will send a signal when it wants to receive data from the M7 modem. The M7 modem will not output data unless this pin is low, or “Flow Control” has been disabled in the modem set-up. When a DTE (such as a PC or microcontroller) wants to stop the flow into it, it negates RTS. Negated "Request To Send" (digital 1) means "request NOT to send to me" (stop sending). When the DTE is ready for more bytes it asserts RTS (digital 0) and the flow of bytes to it resumes. DCE equipment works the same way but sends the stop signal out the CTS pin. Thus it's RTS/CTS flow control using 2 lines. The user may turn this feature off or on, using the **ATCH** command. The default is OFF. To turn it on, issue an **ATCH 1** command.

The M7 modem supports to ability to invert the functionality of the RTS line. If **ATCI** (Com-Invert) is set to 1, the RTS line will operate as above, with the logic levels reversed (e.g., send on .

CTS

This signal is an output from the M7, and it indicates the M7’s ability to send more data. If the user tries to send more data into the M7 than the M7 can transmit over the air, it will negate the signal on this pin. The CTS may be asserted when the serial-port data rate is greater to or equal to the over-the-air rate. For example, if the over-the-air data rate is set to 2400 baud, and the user is send data into the modem at 9600 baud, the modem will negate the CTS signal once the M7’s internal data buffers become full.

CD

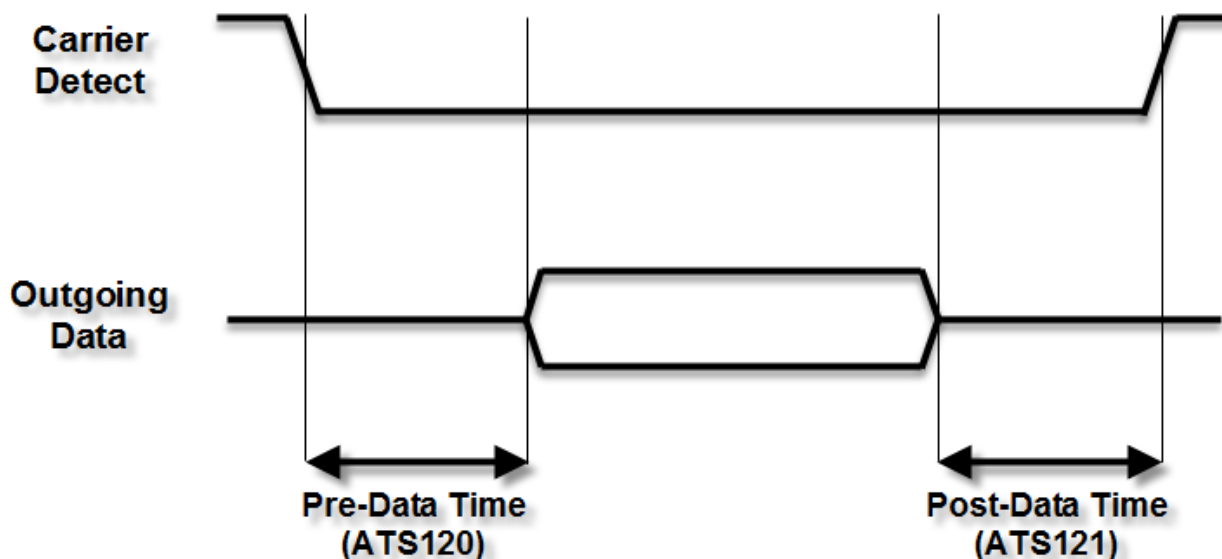
On this line the modem indicates to the DTE that it has received a carrier from a remote device. It will assert this signal any time there is a carrier detected. The modem may be configured to assert this when an RF carrier is detected (any on-channel RF, voice or data), assert it only when another RF modem signal is detected, or always assert it. The operation of this line is configured with the ATR1 command. The default is 1 (asserts when M7 data is detected on the radio receiver).

DTR

This line is an input to the M7. It is normally ignored because the default configuration of the M7 modem is to ignore this signal. If the DTR line is enabled for use, using the **ATK5 1** command, the DTR input line can be used to put the M7 modem into its SLEEP mode. With DTR enabled, anytime the DTR line is a logic 0, the M7 will be operating normally. With DTR enabled, anytime the DTR line is a logic 1, the M7 will go into a SLEEP mode, drawing much less DC power.

CD Output Data Framing

Output Data Framing is used when it is necessary for the serial terminal to wake from sleep or enter an appropriate mode to receive data. In this mode, the Carrier Detect handshaking line is nominally high and only goes low to signal that data is being output. The Pre-Data and Post-Data time can be set from 0-254ms, as indicated in the diagram below.



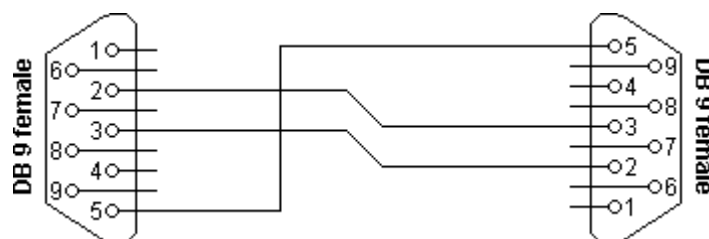
If Data Framing is enabled, any other Carrier Detect and flow control output configuration is ignored. Set **ATS120 255** to disable.

15.2 Null modem without handshaking

Sometimes, a “Null Modem” cable may be required to connect the M7 modem to another device. The specific connections are very dependent upon the type of hardware and handshaking used, but the following sections should help in configuring a null-modem cable.

How to use the handshaking lines in a null modem configuration? The simplest way is to don't use them at all. In that situation, only the data lines and signal ground are cross connected in the null modem communication cable. All other pins have no connection. An example of such a null modem cable without handshaking can be seen in the figure below.

Simple null modem without handshaking



(DB-9 Female shown. Same wiring for male-to-male cable)

Connector 1	Connector 2	Function
2	3	Rx ← Tx
3	2	Tx → Rx
5	5	Signal ground

15.3 Compatibility issues

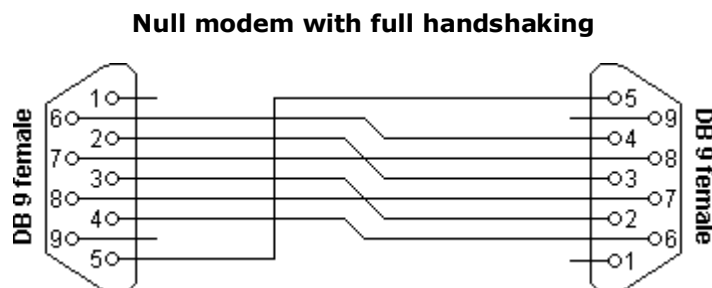
There is a problem, if either of the two devices checks the **DSR** or **CD** inputs. These signals normally define the ability of the other side to communicate. As they are not connected, their signal level will never go high. This might cause a problem.

The same holds for the **RTS/CTS** handshaking sequence. If the software on both sides is well structured, the **RTS** output is set high and then a waiting cycle is started until a ready signal is received on the **CTS** line. This causes the software to hang because no physical connection is present to either **CTS** line to make this possible. The only type of communication which is allowed on such a null modem line is data-only traffic on the cross connected **Rx/Tx** lines.

15.4 Null modem with full handshaking

Caution: Most null modem cables are designed for host-to-host communication and will not work for device-to-device communication! See the section on compatibility issues for more details.

In this null modem cable, seven wires are present. The cable is shown in the following figure.



(DB-9 Female shown. Same wiring for male-to-male cable)

Connector 1	Connector 2	Function
2	3	Rx ← Tx
3	2	Tx → Rx
4	6	DTR → DSR
5	5	Signal ground
6	4	DSR ← DTR
7	8	RTS → CTS
8	7	CTS ← RTS

15.5 Compatibility issues

The null modem cable with full handshaking does not permit the older way of flow control to take place. The main incompatibility is the cross connection of the **RTS** and **CTS** pins. Originally, these pins are used for a question/answer type of flow control. When the full handshaking null modem cable is used, there is no request anymore. The lines are purely used for telling the other side if communication is possible.

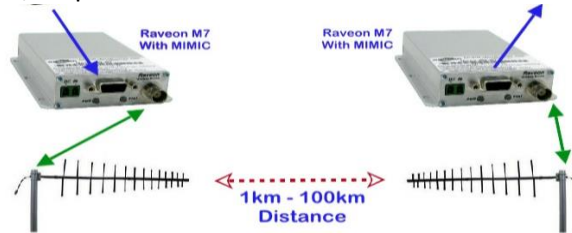
The main advantage of this cable is, that there are two signaling lines in each direction. Both the **RTS** and **DTR** outputs can be used to send flow control information to the other device. This makes it possible to achieve high communication speeds with this type of null modem cable, provided that the system has been designed for it.

Off-the-shelf Host-Host Null Modem Cables

Many off-the-shelf host-to-host null modem cables will not work with the M7 (or any serial device). These cables will wire pins 1 and 6 together, which will connect two outputs together and cause unpredictable issues. If buying off-the-shelf cables, it is important to look for cables that are designed for device-to-device communication (generally with male connectors on either end) and to verify that no shorting connections are made within the cable.

16. MIMIC Mode Overview

A MIMIC mode allows two or more M7s to mimic each other's digital I/O. When in the MIMIC mode, the M7 will periodically transmit its digital status. The M7 will also continue to operate as a radio modem, sending/receiving data using pins 2&3 of the DB9, but the other I/O pins of the DB9 will be used for digital input/output.

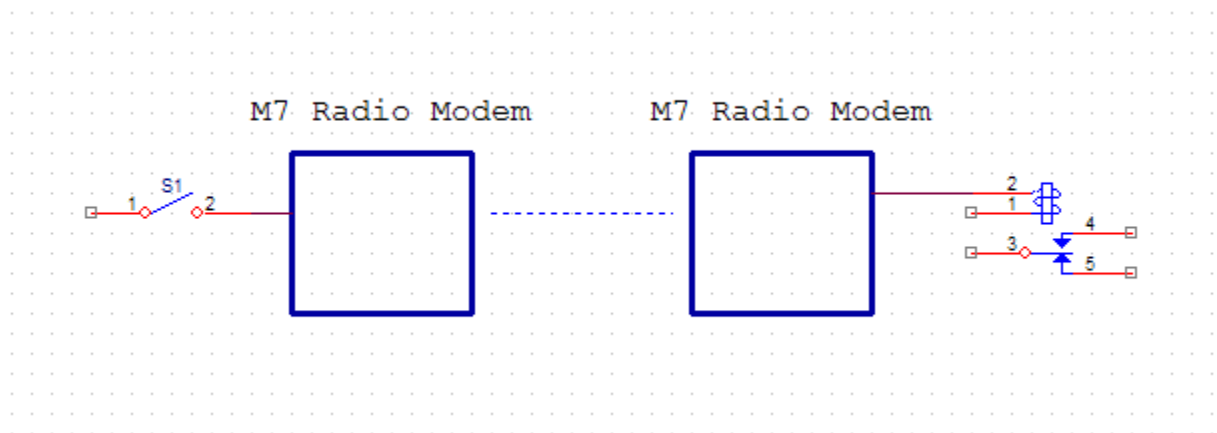


Normally, the Serial I/O connector operates like an RS-232 serial interface. If the MIMIC mode is enabled, the operation of the radio is modified to transmit the digital status of the INPUT0 and INPUT1 pins across the radio link, and output their status on the OUT0 and OUT1 pins.

There are two aspects to the MIMIC mode:

1. The transmitter that sends the status of its digital inputs. This is enabled with the **MIMIC X Y** command.
2. The unit that receives the over-the-air MIMIC message, and sets its digital outputs to match the inputs of the sending station. This function is enabled with the **ATIO 1** command. ATIO 1 configures the DB9 serial port to operate with RS-232 signal levels, and use the digital control lines for digital I/O instead of RS-232 flow control. ATIO 0 turns off MIMIC reception ability, and the digital I/O pins will operate as flow control signals.

The goal of the MIMIC mode is quite simple: Flip a switch at one location, and have something at another location turn on or off.



Please refer to Technical Brief AN163 for more information on the MIMIC mode.

17. Troubleshooting

Symptom: Unit will not receive

Solution #1. Verify that the modem is on the correct RF channel. If it is, the RX LED should blink every time another modem tries to transmit to it. If the RX LED does not blink when it should be receiving, it is on the wrong RF frequency.

Solution #2. If the addresses match, and RX LED blinks but still no reception of data, verify that the RTS signal is asserted. The M7 will not output data if the RTS signal on the DB-9 I/O connector is not asserted. If the user's hardware cannot assert the RTS hardware line, disable hardware flow control in the M7 modem, using the **ATCH 0** command.

Solution #3. If the RX LED blinks, verify that the Unit Address of the sending modem matches the unit address of the receiving modem. If this is OK, verify that the over-the-air baud rate of all modems is the same (ATR2 command).

Solution #4. Verify Low Power Mode. The M7 has an optional Low Power Mode (LPM). If LPM is enabled, the M7 will power down whenever the DTR line of the serial port is turned off. The Power LED will blink once every 10 seconds in the LPM mode. The **ATSM** command is used to set or read the Low Power Mode. **ATSM 1** enables it, and **ATSM 0** disables it. If LPM is used (**ATSM 1**), then the M7 will turn off when the DTR line is off, or the program connected to the serial port is closed, or the RS-232 connector is unplugged.

Symptom: Unit will not transmit

Solution #1. Verify that CTS is wired. Some devices that could be connected to the M7 will require the CTS signal to be asserted. The M7 does assert this signal, but if the wire is not connected, your device may not be outputting data to the M7. If the TX LED blinks, the M7 is transmitting data. Every time data enters the modem, the TX LED should blink.

Solution #2. Verify that serial port timeout is OK. The ATG0 command sets the number of microseconds that the M7 will look for in the serial input data stream. If a pause greater than this value happens, the modem will transmit. If the ATG0 parameter is set very large, say 2000000, this means 2 seconds, and the modem may simply be waiting a long time.

Solution #3. Verify that the radio channel is clear or BCL is off. The **ATBC 1** command enables Busy Channel Lockout. If BCL is on, the modem will not transmit on a busy channel. The **ATBC 0** command turns it off, and thus the modem will transmit when it needs to, regardless if the channel is busy. The RX LED on the front of the modem is illuminated whenever the radio channel is busy (RF present).

Solution #4. Verify Low Power Mode. The M7 has an optional Low Power Mode (LPM). If LPM is enabled, the M7 will power down whenever the DTR line of the serial port is turned off. The Power LED will blink once every 10 seconds in the LPM mode. The **ATSM** command is used to set or read the Low Power Mode. **ATSM 1** enables it, and **ATSM 0** disables it. If LPM is used (**ATSM 1**), then the M7 will turn off when the DTR line is off, or the program connected to the serial port is closed, or the RS-232 connector is unplugged.

Symptom: Receive light blinks, but no data is received

Solution #1. Verify Input/Output Configuration. The M7 has numerous I/O options. RS-232 is standard, but Ethernet, RS-485 or RS422 may be configured also. Use the ATIO command to view how the I/O is configured. ATIO 0 is the default (RS-232 mode).

Solution #2. Verify the serial port baud rate. This is difficult if it is set wrong, because you cannot enter the command mode to check it. Try all possible baud rates, and see if one of them works with the modem.

Alternately, remove the rear cover of the modem, and press the CONFIG button. This will force the modem into the Command Mode, as well as set the serial port to 9600 baud, 8 data bits, one stop, and no parity. If the baud-rate was OK, verify the AT, BT and CT times, that they are long enough for you to enter the +++ string.

Symptom: Long delay before transmitting

Solution #1. Verify that serial port timeout is OK. The ATR3 command sets the number of milliseconds that the M7 will look for in the serial input data stream. If a pause greater than this value happens, the modem will transmit. If the ATG0 parameter is set very large, say 2000, this means 2 seconds, and the modem may simply be waiting a long time. Typical settings for this parameter are 20 (20mS).

Symptom: Cannot enter Command Mode

Solution #1. Verify the serial port baud rate. This is difficult if it is set wrong, because you cannot enter the command mode to check it. Try all possible baud rates, and see if one of them works with the modem. Alternately, remove the rear cover of the modem, and press the CONFIG button. This will force the modem into the Command Mode, as well as set the serial port to 9600 baud, 8 data bits, one stop, and no parity. If the baud-rate was OK, verify the AT, BT and CT times, that they are long enough for you to enter the +++ string.

Solution #2. Handshaking. You may have hardware handshaking enabled on your terminal program, but the hardware or cable may not support it. Disable hardware handshaking on your terminal program to verify this is the issue.

Symptom: Modem appears dead.

Solution #1. Verify the power is on. When the modem has good DC power, the PWR LED will blink once per second. If it is not blinking, either the modem does not have power, the modem is broken, or the LEDs have been disabled via the **ATL0** command.

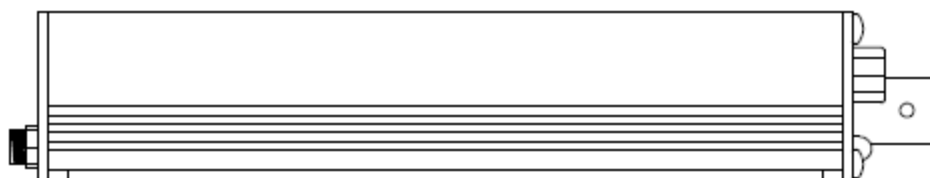
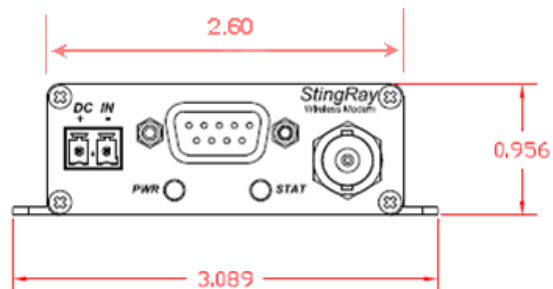
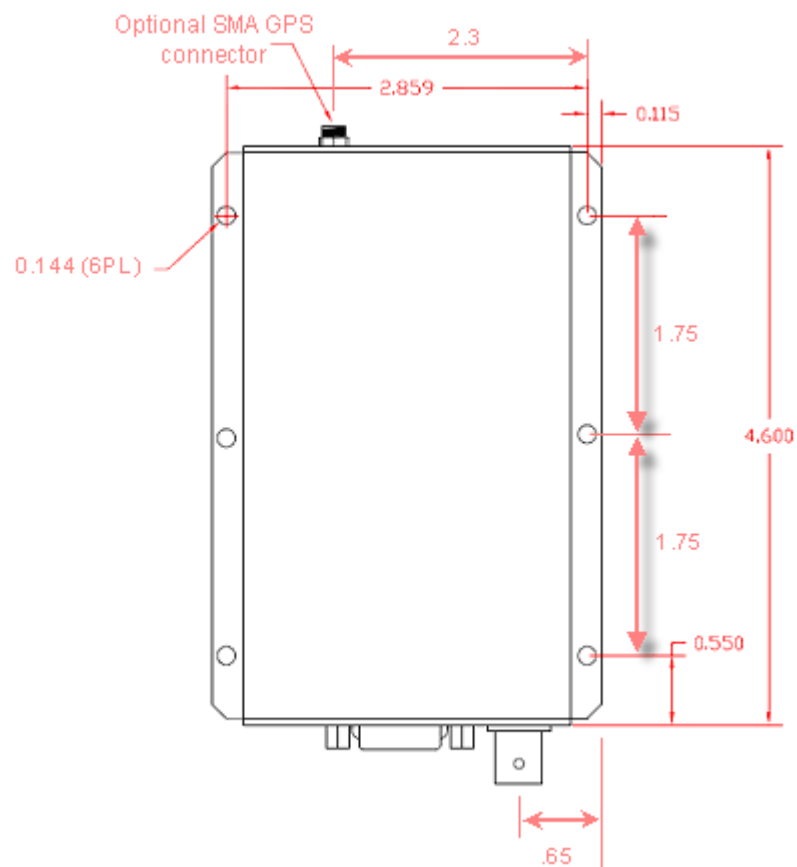
Solution #2. Verify the internal fuse OK. There is an internal fuse in the RV-M7, protecting it from reverse-voltage and electrical failures. If the power LED does not blink or come on when DC is applied, check the fuse and replace it with the same type 3-amp mini fuse, and try again. If you replace the fuse, the unit must be carefully check for damage and proper operation before being installed. If you replace the fuse, you must use a *Littlefuse* brand fuse, part number 0297003 or Raveon part, number 1X726-3 to maintain calibration of your unit.

Solution #3. Verify Low Power Mode. The M7 has an optional Low Power Mode (LPM). If LPM is enabled, the M7 will power down whenever the DTR line of the serial port is turned off. The Power LED will blink once every 10 seconds in the LPM mode. The **ATSM** command is used to set or read the Low Power Mode. **ATSM 1** enables it, and **ATSM 0** disables it. If LPM is used (**ATSM 1**), then the M7 will turn off when the DTR line is off, or the program connected to the serial port is closed, or the RS-232 connector is unplugged.

Symptom: Repeater will not repeat.

Solution #1. Verify the repeater's Unit ID is unique. An RV-M7 configured to be a repeater will not repeat messages it originated. If other units in the system have the same ID as the repeater, the repeater will not repeat them because it thinks the it originated the transmission. Set the MTID of the repeater to a unique ID number.

18. Mechanical



Limited Two Year Warranty

If within 24 months from date of purchase, this Product fails to conform to Raveon Technologies Corporation's (the Company) published specifications for the model purchased due to a defect in material or workmanship, Raveon Technologies Corporation will repair or replace it, at Raveon's sole discretion. This warranty is extended to the original purchasing end user only and is not transferable. Any claim for breach of warranty must be brought to the Company's attention within such twelve (24) month period and the Product must be returned for action on any such claim within twelve (24) months from the date of purchase. Within a reasonable period of time after a claim, the Company will correct any failure of the Product to conform to specifications or any defect in materials or workmanship, or replace the Product, or at its option provide a full refund of the purchase price. A repaired or replaced Product is warranted for 90 days from the date of return shipment to the buyer, or for the balance of the original warranty period, whichever is longer. These remedies are the buyer's exclusive remedies for breach of warranty.

This warranty does not apply to: (a) product damage caused by accident, dropping or abuse in handling, acts of God or any negligent use; (b) units which have been subject to unauthorized repair, opened, taken apart or otherwise modified; (c) units not used in accordance with instructions; (d) damages exceeding the cost of the product; (e) batteries; (f) the finish on any portion of the product, such as surface and/or weathering, as this is considered normal wear and tear; (g) transit damage, initial installation costs, removal costs, or reinstallation costs; (h) damage due to lighting, floods, fire, or earthquakes; (i) any product, components or parts not manufactured by the Company; (j) defects caused by failure to provide a suitable installation environment for the Radio; (k) damage during shipment; (l) that the Product will be free from any claim for infringement of any patent, trademark, copyright or other proprietary right, including trade secrets.

RAVEON TECHNOLOGIES INCORPORATED WILL NOT BE LIABLE FOR INCIDENTAL OR CONSEQUENTIAL DAMAGES ARISING DIRECTLY OR INDIRECTLY OUT OF THE OWNERSHIP, USE OR OPERATION OF THE RADIO REGARDLESS OF WHETHER SUCH DAMAGES ARE PREDICATED OR BASED UPON BREACH OF WARRANTY, BREACH OF CONTRACT, NEGLIGENCE, STRICT TORT, OR ANY OTHER LEGAL THEORY. SUCH DAMAGES INCLUDE, BUT ARE NOT LIMITED TO, LOSS OF PROFITS, LOSS OF SAVINGS OR REVENUE, LOSS OF USE OF THE RADIO OR ANY ASSOCIATED EQUIPMENT, COST OF CAPITAL, COST OF ANY SUBSTITUTE EQUIPMENT, FACILITIES OR SERVICES, THE CLAIMS OF THIRD PARTIES, INCLUDING CUSTOMERS AND INJURY TO PROPERTY. SOME STATES DO NOT ALLOW THE EXCLUSION OR LIMITATION OF INCIDENTAL OR CONSEQUENTIAL DAMAGES, SO THE ABOVE LIMITATION OR EXCLUSION MAY NOT APPLY TO YOU. THIS WARRANTY IS IN LIEU OF ALL OTHER EXPRESS OR IMPLIED WARRANTIES. ALL IMPLIED WARRANTIES, INCLUDING THE WARRANTY OF MERCHANTABILITY AND THE WARRANTY OF FITNESS FOR A PARTICULAR PURPOSE, ARE HEREBY MODIFIED TO EXIST ONLY AS CONTAINED IN THIS LIMITED WARRANTY, AND SHALL BE OF THE SAME DURATION AS THE WARRANTY PERIOD STATED ABOVE. SOME STATES DO NOT ALLOW LIMITATIONS ON THE DURATION OF AN IMPLIED WARRANTY, SO THE ABOVE LIMITATION MAY NOT APPLY TO YOU.

This warranty gives you specific legal rights and you may also have other rights which vary from state to state.

No employee of the Company, or any other party is authorized to make any warranty in addition to those made in this document. This warranty limits the Company's risk and allocates the risks of product failure between the Company and the buyer. This allocation is recognized by both parties and is reflected in the price of the goods. The buyer acknowledges that it has read this warranty, understands it, and is bound by its terms. This limited warranty is governed by the laws of the State of California, without reference to its conflict of law provisions or the U.N. Convention on Contracts for the International Sale of Goods.

Warranty service is available by mailing postage prepaid to:

***Raveon Technologies Corporation
2320 Cousteau Court
Vista, CA 92081 - USA***

To obtain warranty service, include a copy of the original sales receipt or invoice showing the date, location, and price of purchase. Include a written description of the problem with the product, a phone number and name of person who may be contacted regarding the problem, and the address to where the product should be returned.

Products repaired under warranty will typically have their program memories erased and reset to factory default settings.